

## Product datasheet for **TA336248**

### ETFA Rabbit Polyclonal Antibody

#### Product data:

Product Type:	Primary Antibodies
Applications:	WB
Recommended Dilution:	WB
Reactivity:	Human
Host:	Rabbit
Isotype:	IgG
Clonality:	Polyclonal
Immunogen:	The immunogen for Anti-ETFA Antibody: synthetic peptide directed towards the N terminal of human ETFA. Synthetic peptide located within the following region: FRAAAPGQLRRAASLLRFQSTLVIAEHANDSLAPITLNTITAATRLGGEV
Formulation:	Liquid. Purified antibody supplied in 1x PBS buffer with 0.09% (w/v) sodium azide and 2% sucrose. <i>Note that this product is shipped as lyophilized powder to China customers.</i>
Purification:	Affinity Purified
Conjugation:	Unconjugated
Storage:	Store at -20°C as received.
Stability:	Stable for 12 months from date of receipt.
Predicted Protein Size:	35 kDa
Gene Name:	electron transfer flavoprotein alpha subunit
Database Link:	<a href="#">NP_000117</a> <a href="#">Entrez Gene 2108 Human</a> <a href="#">P13804</a>



[View online »](#)

**Background:**

ETFA participates in catalyzing the initial step of the mitochondrial fatty acid beta-oxidation. It shuttles electrons between primary flavoprotein dehydrogenases and the membrane-bound electron transfer flavoprotein ubiquinone oxidoreductase. Defects in electron-transfer-flavoprotein have been implicated in type II glutaricaciduria in which multiple acyl-CoA dehydrogenase deficiencies result in large excretion of glutaric, lactic, ethylmalonic, butyric, isobutyric, 2-methyl-butyric, and isovaleric acids.ETFA participates in catalyzing the initial step of the mitochondrial fatty acid beta-oxidation. It shuttles electrons between primary flavoprotein dehydrogenases and the membrane-bound electron transfer flavoprotein ubiquinone oxidoreductase. Defects in electron-transfer-flavoprotein have been implicated in type II glutaricaciduria in which multiple acyl-CoA dehydrogenase deficiencies result in large excretion of glutaric, lactic, ethylmalonic, butyric, isobutyric, 2-methyl-butyric, and isovaleric acids. Two transcript variants encoding different isoforms have been found for this gene.

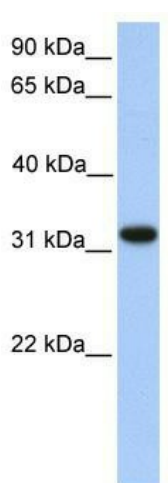
**Synonyms:**

EMA; GA2; MADD

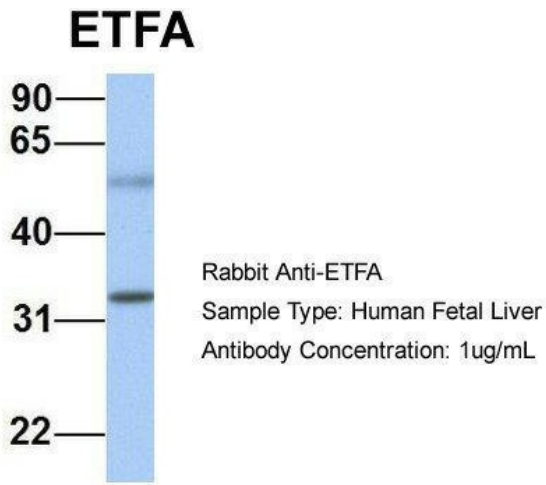
**Note:** Immunogen Sequence Homology: Pig: 100%; Rat: 100%; Human: 100%; Mouse: 100%; Rabbit: 100%; Guinea pig: 100%; Dog: 93%; Bovine: 93%; Horse: 86%

**Protein Families:**

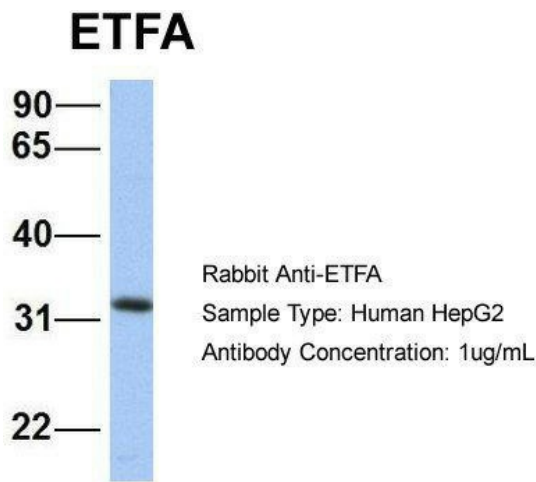
Druggable Genome

**Product images:**

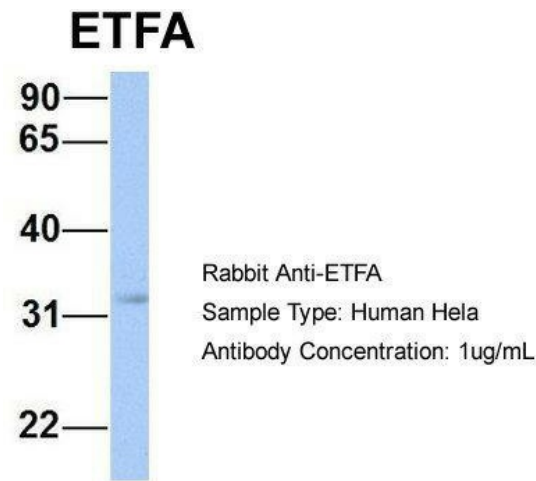
WB Suggested Anti-ETFA Antibody Titration: 0.2-1 ug/ml; Positive Control: Human heart



Host: Rabbit; Target Name: ETFA; Sample Tissue: Human HepG2; Antibody Dilution: 1.0 ug/ml. ETFA is supported by BioGPS gene expression data to be expressed in HepG2



Host: Rabbit; Target Name: ETFA; Sample Tissue: Human HeLa; Antibody Dilution: 1.0 ug/ml. ETFA is supported by BioGPS gene expression data to be expressed in HeLa



Host: Rabbit; Target Name: ETFA; Sample Tissue: Human Fetal Liver; Antibody Dilution: 1.0 ug/ml