

Product datasheet for **TA336247**

Ferritin Light Chain (FTL) Rabbit Polyclonal Antibody

Product data:

Product Type:	Primary Antibodies
Applications:	WB
Recommended Dilution:	WB
Reactivity:	Human
Host:	Rabbit
Isotype:	IgG
Clonality:	Polyclonal
Immunogen:	The immunogen for Anti-FTL Antibody: synthetic peptide directed towards the middle region of human FTL. Synthetic peptide located within the following region: ALLDLHALGSARTDPHLCDFLETHFLDEEVKLIKMGDHLTNLHRLGGPE
Formulation:	Liquid. Purified antibody supplied in 1x PBS buffer with 0.09% (w/v) sodium azide and 2% sucrose. <i>Note that this product is shipped as lyophilized powder to China customers.</i>
Purification:	Affinity Purified
Conjugation:	Unconjugated
Storage:	Store at -20°C as received.
Stability:	Stable for 12 months from date of receipt.
Predicted Protein Size:	20 kDa
Gene Name:	ferritin, light polypeptide
Database Link:	NP_000137 Entrez Gene 2512 Human P02792



[View online »](#)

Background:

FTL is the light subunit of the ferritin protein. Ferritin is the major intracellular iron storage protein in prokaryotes and eukaryotes. It is composed of 24 subunits of the heavy and light ferritin chains. Variation in ferritin subunit composition may affect the rates of iron uptake and release in different tissues. A major function of ferritin is the storage of iron in a soluble and nontoxic state. Defects in this light chain ferritin gene are associated with several neurodegenerative diseases and hyperferritinemia-cataract syndrome. This gene encodes the light subunit of the ferritin protein. Ferritin is the major intracellular iron storage protein in prokaryotes and eukaryotes. It is composed of 24 subunits of the heavy and light ferritin chains. Variation in ferritin subunit composition may affect the rates of iron uptake and release in different tissues. A major function of ferritin is the storage of iron in a soluble and nontoxic state. Defects in this light chain ferritin gene are associated with several neurodegenerative diseases and hyperferritinemia-cataract syndrome. This gene has multiple pseudogenes. Publication Note: This RefSeq record includes a subset of the publications that are available for this gene. Please see the Entrez Gene record to access additional publications.

Synonyms:

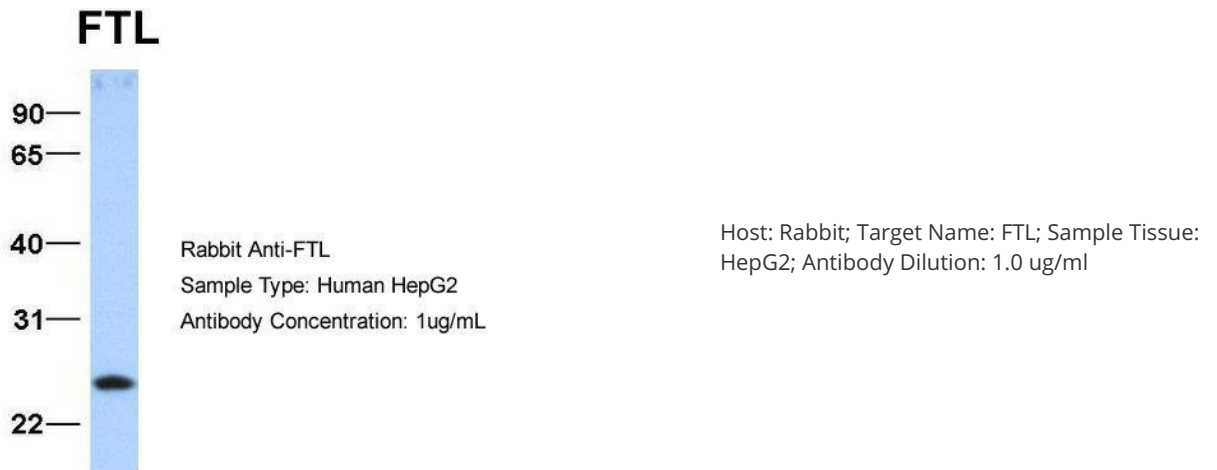
LFTD; NBIA3

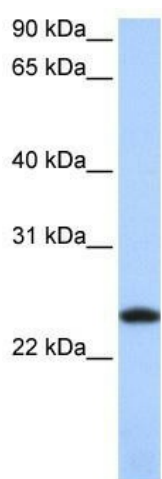
Note:

Immunogen Sequence Homology: Rat: 100%; Human: 100%; Mouse: 100%; Dog: 93%; Pig: 93%; Rabbit: 93%; Guinea pig: 92%; Horse: 86%; Bovine: 79%; Sheep: 77%

Protein Families:

Druggable Genome

Product images:



WB Suggested Anti-FTL Antibody Titration: 0.2-1 ug/ml; Positive Control: HepG2 cell lysate. FTL is strongly supported by BioGPS gene expression data to be expressed in Human HepG2 cells