

Product datasheet for **TA336246**

FUCA1 Rabbit Polyclonal Antibody

Product data:

Product Type:	Primary Antibodies
Applications:	WB
Recommended Dilution:	WB
Reactivity:	Human
Host:	Rabbit
Isotype:	IgG
Clonality:	Polyclonal
Immunogen:	The immunogen for Anti-FUCA1 Antibody: synthetic peptide directed towards the middle region of human FUCA1. Synthetic peptide located within the following region: TNWPSPVSWNWNNSKDVGPHRDLVGELGTALRKRNIYGLYHSLLEWFHPL
Formulation:	Liquid. Purified antibody supplied in 1x PBS buffer with 0.09% (w/v) sodium azide and 2% sucrose. <i>Note that this product is shipped as lyophilized powder to China customers.</i>
Purification:	Affinity Purified
Conjugation:	Unconjugated
Storage:	Store at -20°C as received.
Stability:	Stable for 12 months from date of receipt.
Predicted Protein Size:	54 kDa
Gene Name:	fucosidase, alpha-L- 1, tissue
Database Link:	NP_000138 Entrez Gene 2517 Human P04066
Background:	Alpha-L-fucosidase (EC 3.2.1.51) is a lysosomal enzyme involved in the degradation of fucose-containing glycoproteins and glycolipids. At least 2 separate polymorphic alpha-L-fucosidases are recognized in man: that in tissues, FUCA1, which is deficient in
Synonyms:	FUCA
Note:	Immunogen Sequence Homology: Dog: 100%; Pig: 100%; Rat: 100%; Horse: 100%; Human: 100%; Mouse: 100%; Bovine: 100%; Guinea pig: 100%; Rabbit: 86%

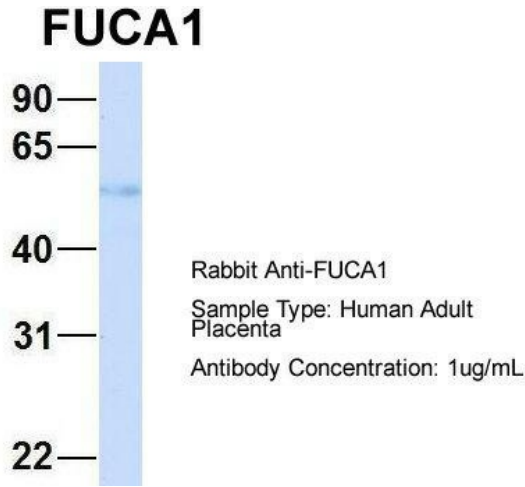


[View online »](#)

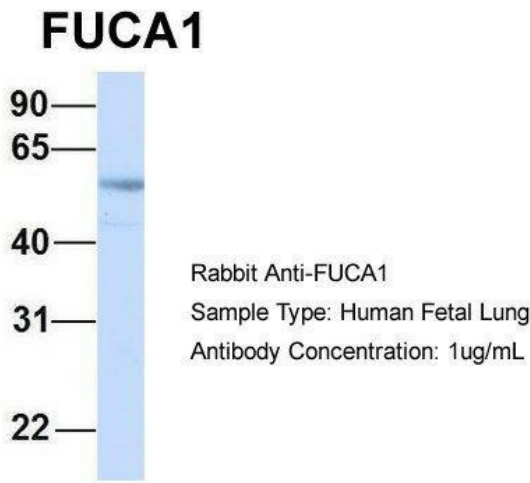
Protein Families: Druggable Genome

Protein Pathways: Lysosome, Other glycan degradation

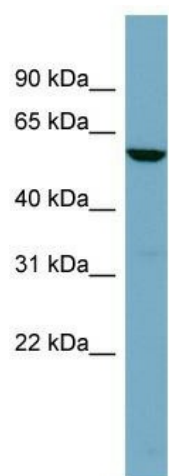
Product images:



WB Suggested Anti-FUCA1 Antibody Titration: 0.2-1 ug/ml; ELISA Titer: 1: 62500; Positive Control: HT1080 cell lysate. FUCA1 is supported by BioGPS gene expression data to be expressed in HT1080



1Hum. Adult Placenta; Host: Rabbit; Target Name: CHAD; Sample Tissue: Human Adult Placenta; Antibody Dilution: 1.0 ug/ml



Host: Rabbit; Target Name: FUCA1; Sample
Tissue: Human Fetal Lung; Antibody Dilution: 1.0
ug/ml