

Product datasheet for **TA336242**

Gelsolin (GSN) Rabbit Polyclonal Antibody

Product data:

Product Type:	Primary Antibodies
Applications:	IHC, WB
Recommended Dilution:	WB, IHC, IF
Reactivity:	Human
Host:	Rabbit
Isotype:	IgG
Clonality:	Polyclonal
Immunogen:	The immunogen for Anti-GSN Antibody: synthetic peptide directed towards the C terminal of human GSN. Synthetic peptide located within the following region: KPMIIYKGGTSREGGQTAPASTRLFQVRANSAGATRAVEVLPKAGALNSN
Formulation:	Liquid. Purified antibody supplied in 1x PBS buffer with 0.09% (w/v) sodium azide and 2% sucrose. <i>Note that this product is shipped as lyophilized powder to China customers.</i>
Purification:	Affinity Purified
Conjugation:	Unconjugated
Storage:	Store at -20°C as received.
Stability:	Stable for 12 months from date of receipt.
Predicted Protein Size:	83 kDa
Gene Name:	gelsolin
Database Link:	NP_000168 Entrez Gene 2934 Human P06396



[View online »](#)

Background: GSN binds to the 'plus' ends of actin monomers and filaments to prevent monomer exchange. It is a calcium-regulated protein, which functions in both assembly and disassembly of actin filaments. Defects in the gene encoding GSN are a cause of familial amyloidosis Finnish type (FAF). The protein encoded by this gene binds to the 'plus' ends of actin monomers and filaments to prevent monomer exchange. The encoded calcium-regulated protein functions in both assembly and disassembly of actin filaments. Defects in this gene are a cause of familial amyloidosis Finnish type (FAF). Multiple transcript variants encoding several different isoforms have been found for this gene.

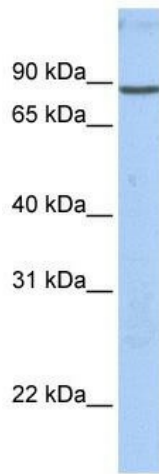
Synonyms: ADF; AGEL

Note: Immunogen Sequence Homology: Pig: 100%; Rat: 100%; Horse: 100%; Human: 100%; Sheep: 100%; Bovine: 100%; Zebrafish: 100%; Guinea pig: 100%; Dog: 93%; Mouse: 93%; Rabbit: 93%

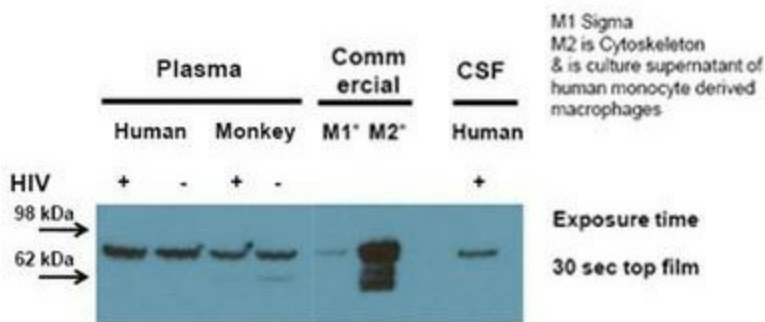
Protein Families: Druggable Genome, Secreted Protein

Protein Pathways: Fc gamma R-mediated phagocytosis, Regulation of actin cytoskeleton

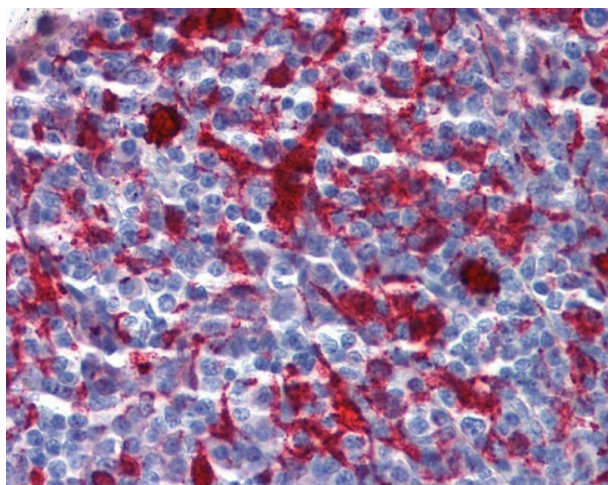
Product images:



WB Suggested Anti-GSN Antibody Titration: 0.2-1 ug/ml; Positive Control: MCF7 cell lysate



GSN antibody - C-terminal region validated by WB using pFA fixed human tonsil tissue



IHC Information: Paraffin embedded tonsil tissue, tested with an antibody Dilution of 5 ug/ml.