

## Product datasheet for **TA336239**

### HMGCL Rabbit Polyclonal Antibody

#### Product data:

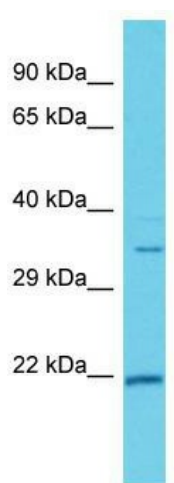
Product Type:	Primary Antibodies
Applications:	WB
Recommended Dilution:	WB
Reactivity:	Rat
Host:	Rabbit
Isotype:	IgG
Clonality:	Polyclonal
Immunogen:	The immunogen for Anti-Hmgcl Antibody is: synthetic peptide directed towards the C-terminal region of Rat Hmgcl. Synthetic peptide located within the following region: MGVSVDSSVAGLGGCPYAKGASGNLATEDLVYMLTGLGIHTGVNLQKLL
Formulation:	Liquid. Purified antibody supplied in 1x PBS buffer with 0.09% (w/v) sodium azide and 2% sucrose. <i>Note that this product is shipped as lyophilized powder to China customers.</i>
Purification:	Affinity Purified
Conjugation:	Unconjugated
Storage:	Store at -20°C as received.
Stability:	Stable for 12 months from date of receipt.
Predicted Protein Size:	35 kDa
Gene Name:	3-hydroxymethyl-3-methylglutaryl-CoA lyase
Database Link:	<a href="#">NP_000182</a> <a href="#">Entrez Gene 79238 Rat</a> <a href="#">P35914</a>
Background:	Hmgcl is an enzyme of the ketogenic 3-hydroxy-3-methylglutaryl-CoA cycle.
Synonyms:	HL
Note:	Immunogen Sequence Homology: Dog: 100%; Human: 100%
Protein Families:	Druggable Genome



[View online »](#)

**Protein Pathways:** Butanoate metabolism, Metabolic pathways, Synthesis and degradation of ketone bodies, Valine, leucine and isoleucine degradation

**Product images:**



Host: Rabbit; Target Name: Hmgcl; Sample Tissue: Rat Thymus lysates; Antibody Dilution: 1.0 ug/ml