

Product datasheet for **TA336235**

DNA Ligase I (LIG1) Rabbit Polyclonal Antibody

Product data:

Product Type:	Primary Antibodies
Applications:	WB
Recommended Dilution:	WB
Reactivity:	Human
Host:	Rabbit
Isotype:	IgG
Clonality:	Polyclonal
Immunogen:	The immunogen for Anti-LIG1 Antibody: synthetic peptide directed towards the middle region of human LIG1. Synthetic peptide located within the following region: ALEGGEVKIFSRNQEDNTGKYPDIISRIPKIKLPSVTSFILDTEAVAWDR
Formulation:	Liquid. Purified antibody supplied in 1x PBS buffer with 0.09% (w/v) sodium azide and 2% sucrose. <i>Note that this product is shipped as lyophilized powder to China customers.</i>
Purification:	Affinity Purified
Conjugation:	Unconjugated
Storage:	Store at -20°C as received.
Stability:	Stable for 12 months from date of receipt.
Predicted Protein Size:	102 kDa
Gene Name:	DNA ligase 1
Database Link:	NP_000225 Entrez Gene 3978 Human P18858



[View online »](#)

Background:

LIG1 is DNA ligase I, with functions in DNA replication and the base excision repair process. Mutations in LIG1 that lead to DNA ligase I deficiency result in immunodeficiency and increased sensitivity to DNA-damaging agents. LIG1 encodes DNA ligase I, with functions in DNA replication and the base excision repair process. Mutations in LIG1 that lead to DNA ligase I deficiency result in immunodeficiency and increased sensitivity to DNA-damaging agents. Publication Note: This RefSeq record includes a subset of the publications that are available for this gene. Please see the Entrez Gene record to access additional publications.

Synonyms:

MGC117397; MGC130025

Note:

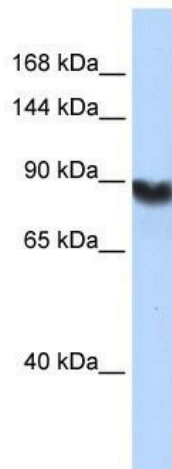
Immunogen Sequence Homology: Dog: 100%; Pig: 100%; Human: 100%; Mouse: 100%; Rabbit: 100%; Guinea pig: 100%; Rat: 93%; Horse: 93%; Bovine: 93%; Zebrafish: 93%; Goat: 79%

Protein Families:

Druggable Genome

Protein Pathways:

Base excision repair, DNA replication, Mismatch repair, Nucleotide excision repair

Product images:

WB Suggested Anti-LIG1 Antibody Titration: 0.2-1 ug/ml; Positive Control: HepG2 cell lysate LIG1 is supported by BioGPS gene expression data to be expressed in HepG2