

Product datasheet for TA336225

Glutathione Reductase (GSR) Rabbit Polyclonal Antibody

Product data:

Product Type:	Primary Antibodies
Applications:	IF, WB
Recommended Dilution:	WB, IF
Reactivity:	Human, Mouse, Zebrafish
Host:	Rabbit
Isotype:	IgG
Clonality:	Polyclonal
Immunogen:	The immunogen for Anti-GSR Antibody: synthetic peptide directed towards the N terminal of human GSR. Synthetic peptide located within the following region: PTIEVSGKKYTAPHILIATGGMPSTPHESQIPGASLGITSDGFFQLEELP
Formulation:	Liquid. Purified antibody supplied in 1x PBS buffer with 0.09% (w/v) sodium azide and 2% sucrose. <i>Note that this product is shipped as lyophilized powder to China customers.</i>
Purification:	Affinity Purified
Conjugation:	Unconjugated
Storage:	Store at -20°C as received.
Stability:	Stable for 12 months from date of receipt.
Predicted Protein Size:	56 kDa
Gene Name:	glutathione reductase
Database Link:	NP_000628 Entrez Gene 14782 Mouse Entrez Gene 2936 Human P00390
Background:	GSR belongs to the class-I pyridine nucleotide-disulfide oxidoreductase family. It maintains high levels of reduced glutathione in the cytosol. Both glutathione and glutathione reductase are inducible by D3T, and that upregulation of GSH biosynthesis underlies D3T-mediated cytoprotection against ROS/RNS-elicited injury to human vascular smooth muscle cells.
Synonyms:	HEL-75



[View online »](#)

Note: Immunogen Sequence Homology: Pig: 100%; Human: 100%; Mouse: 100%; Rabbit: 100%; Guinea pig: 100%; Dog: 93%; Rat: 93%; Bovine: 93%; Horse: 86%

Protein Families: Druggable Genome

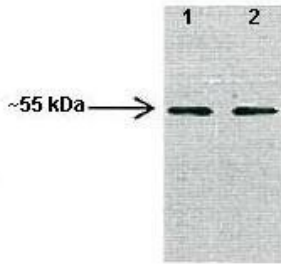
Protein Pathways: Glutathione metabolism

Product images:



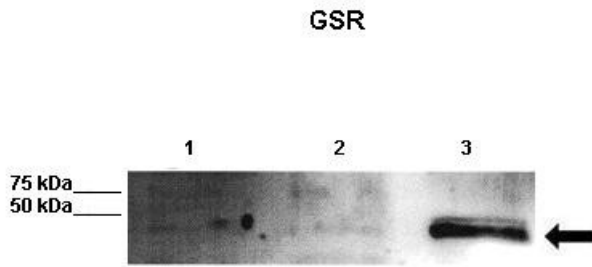
WB Suggested Anti-GSR Antibody Titration: 0.2-1 ug/ml; ELISA Titer: 1: 312500; Positive Control: Hela cell lysate

Gsr

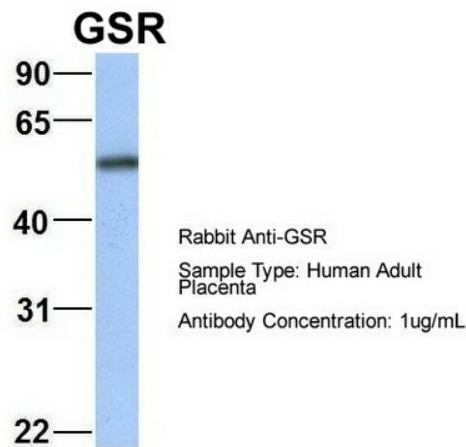


Lanes: 1: 40ug mouse heart lysate, 2: 40ug mouse heart lysate; Primary Antibody Dilution: 1: 1000; Secondary Antibody: Anti-rabbit HRP; Secondary Antibody Dilution: 1: 10000; Gene Name: GSR; Submitted by: Anonymous;

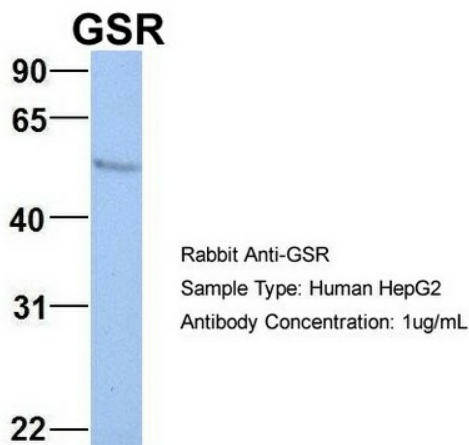
See Immunoblot 2 Data and customer Feedback for more Information



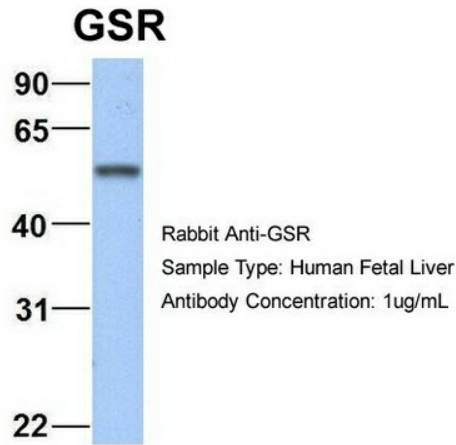
WB Suggested Anti-GSR Antibody; Positive Control: Lane 1: 10 ug untreated zebrafish head lysate Lane 2: 10 ug 3hr H₂O₂ treated zebrafish head lysate Lane 3: 10ug 6hr H₂O₂ treated zebrafish head lysate; Primary Antibody Dilution: 1: 1000; Secondary Antibody: Anti rabbit-HRP; Secondary Antibody Dilution: 1: 10, 000; Submitted by: Dr. Yuk Fai Leung, Purdue University



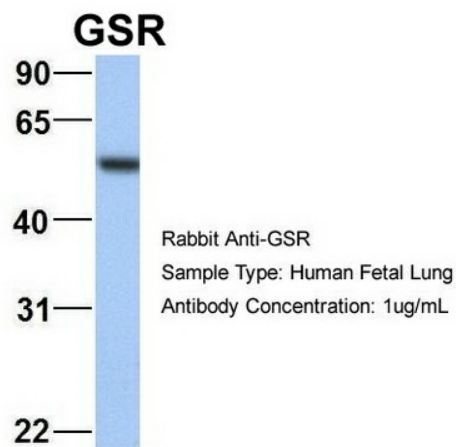
6Hum. Adult Placenta; Host: Rabbit; Target Name: CHAD; Sample Tissue: Human Adult Placenta; Antibody Dilution: 1.0 ug/ml



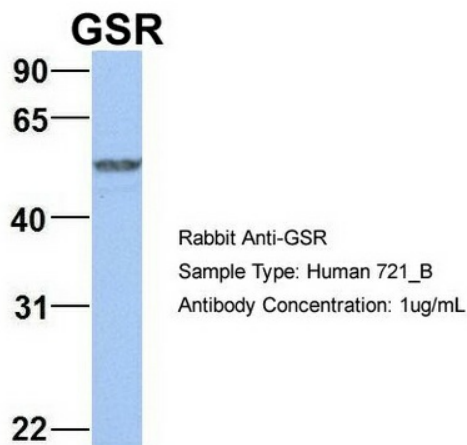
7Human HepG2; Host: Rabbit; Target Name: EGFL8; Sample Tissue: HepG2; Antibody Dilution: 1.0 ug/ml GSR is supported by BioGPS gene expression data to be expressed in HepG2



5Hum. Fetal Liver; Host: Rabbit; Target Name: FAM46C; Sample Tissue: Human Fetal Liver; Antibody Dilution: 1.0 ug/ml



4Hum. Fetal Lung; Host: Rabbit; Target Name: NSUN6; Sample Tissue: Human Fetal Lung; Antibody Dilution: 1.0 ug/ml



8Human 721_B; Host: Rabbit; Target Name: WT1; Sample Tissue: 721_B; Antibody Dilution: 1.0 ug/ml. GSR is supported by BioGPS gene expression data to be expressed in 721_B



Rabbit Anti-GSR Antibody; Formalin Fixed Paraffin Embedded Tissue: Human Bronchial Epithelial Tissue; Observed Staining: Cytoplasmic; Primary Antibody Concentration: 1: 100; Secondary Antibody: Donkey anti-Rabbit-Cy3; Secondary Antibody Concentration: 1: 200; Magnification: 20X; Exposure Time: 0.5–2.0 sec;