

## Product datasheet for **TA336224**

### IL13 receptor alpha 2 (IL13RA2) Rabbit Polyclonal Antibody

#### Product data:

Product Type:	Primary Antibodies
Applications:	WB
Recommended Dilution:	WB
Reactivity:	Human
Host:	Rabbit
Isotype:	IgG
Clonality:	Polyclonal
Immunogen:	The immunogen for Anti-IL13RA2 Antibody: synthetic peptide directed towards the middle region of human IL13RA2. Synthetic peptide located within the following region: GQNIGCRFPYLEASDYKDFYICVNGSSENKPIRSSYFTFQLQNIVKPLPP
Formulation:	Liquid. Purified antibody supplied in 1x PBS buffer with 0.09% (w/v) sodium azide and 2% sucrose. <i>Note that this product is shipped as lyophilized powder to China customers.</i>
Purification:	Affinity Purified
Conjugation:	Unconjugated
Storage:	Store at -20°C as received.
Stability:	Stable for 12 months from date of receipt.
Predicted Protein Size:	42 kDa
Gene Name:	interleukin 13 receptor subunit alpha 2
Database Link:	<a href="#">NP_000631</a> <a href="#">Entrez Gene 3598 Human</a> <a href="#">Q14627</a>



[View online »](#)

**Background:**

IL13RA2 is closely related to IL13RA1, a subunit of the interleukin 13 receptor complex. IL13RA2 binds IL13 with high affinity, but lacks cytoplasmic domain, and does not appear to function as a signal mediator. It is reported to play a role in the internalization of IL13. The protein encoded by this gene is closely related to IL13RA1, a subunit of the interleukin 13 receptor complex. This protein binds IL13 with high affinity, but lacks cytoplasmic domain, and does not appear to function as a signal mediator. It is reported to play a role in the internalization of IL13. Publication Note: This RefSeq record includes a subset of the publications that are available for this gene. Please see the Entrez Gene record to access additional publications.

**Synonyms:**

CD213A2; CT19; IL-13R; IL13BP

**Note:**

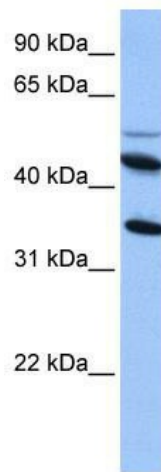
Immunogen Sequence Homology: Human: 100%; Rat: 79%; Rabbit: 79%

**Protein Families:**

Druggable Genome, Transmembrane

**Protein Pathways:**

Jak-STAT signaling pathway

**Product images:**

WB Suggested Anti-IL13RA2 Antibody Titration:  
0.2-1 ug/ml; Positive Control: HepG2 cell lysate