

## Product datasheet for **TA336222**

### ALDH3B1 Rabbit Polyclonal Antibody

#### Product data:

Product Type:	Primary Antibodies
Applications:	WB
Recommended Dilution:	WB
Reactivity:	Human
Host:	Rabbit
Isotype:	IgG
Clonality:	Polyclonal
Immunogen:	The immunogen for Anti-ALDH3B1 Antibody: synthetic peptide directed towards the N terminal of human ALDH3B1. Synthetic peptide located within the following region: DPLGDTLRRLREAFHAGRTRPAEFRAAQLQGLGRFLQENKQLLDALAQD
Formulation:	Liquid. Purified antibody supplied in 1x PBS buffer with 0.09% (w/v) sodium azide and 2% sucrose. <i>Note that this product is shipped as lyophilized powder to China customers.</i>
Purification:	Affinity Purified
Conjugation:	Unconjugated
Storage:	Store at -20°C as received.
Stability:	Stable for 12 months from date of receipt.
Predicted Protein Size:	52 kDa
Gene Name:	aldehyde dehydrogenase 3 family member B1
Database Link:	<a href="#">NP_000685</a> <a href="#">Entrez Gene 221 Human</a> <a href="#">P43353</a>



[View online »](#)

**Background:**

The aldehyde dehydrogenases are a family of isozymes that may play a major role in the detoxification of aldehydes generated by alcohol metabolism and lipid peroxidation. ALDH3B1 is highly expressed in kidney and lung. The aldehyde dehydrogenases are a family of isozymes that may play a major role in the detoxification of aldehydes generated by alcohol metabolism and lipid peroxidation. This particular gene spans about 20 kb of genomic DNA and is composed of 9 coding exons. The gene encodes a single transcript of 2.8 kb which is highly expressed in kidney and lung. The functional significance of this gene as well as the cellular localization of its product are presently unknown. Two transcript variants encoding different isoforms have been found for this gene.

**Synonyms:**

ALDH4; ALDH7

**Note:**

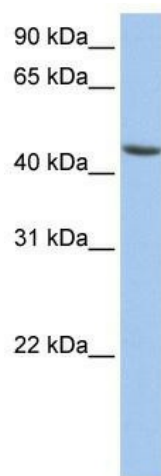
Immunogen Sequence Homology: Human: 100%; Rat: 93%; Mouse: 93%; Pig: 86%; Horse: 86%; Bovine: 86%; Guinea pig: 86%; Dog: 83%

**Protein Families:**

Druggable Genome

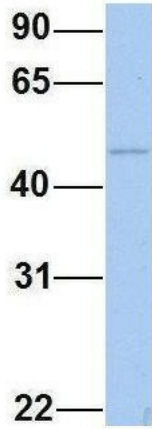
**Protein Pathways:**

Drug metabolism - cytochrome P450, Glycolysis / Gluconeogenesis, Histidine metabolism, Metabolic pathways, Metabolism of xenobiotics by cytochrome P450, Phenylalanine metabolism, Tyrosine metabolism

**Product images:**

WB Suggested Anti-ALDH3B1 Antibody Titration:  
0.2-1 ug/ml; ELISA Titer: 1: 62500; Positive  
Control: HepG2 cell lysate

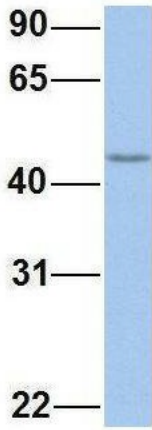
## ALDH3B1



Rabbit Anti-ALDH3B1  
Sample Type: Human HeLa  
Antibody Concentration: 1ug/mL

Host: Rabbit; Target Name: ALDH3B1; Sample Tissue: HeLa; Antibody Dilution: 1.0 ug/ml  
ALDH3B1 is strongly supported by BioGPS gene expression data to be expressed in Human HeLa cells

## ALDH3B1



Rabbit Anti-ALDH3B1  
Sample Type: Human Jurkat  
Antibody Concentration: 1ug/mL

Host: Rabbit; Target Name: ALDH3B1; Sample Tissue: Jurkat; Antibody Dilution: 1.0 ug/ml  
ALDH3B1 is supported by BioGPS gene expression data to be expressed in Jurkat