

Product datasheet for **TA336215**

Guanylate kinase (GUK1) Rabbit Polyclonal Antibody

Product data:

Product Type:	Primary Antibodies
Applications:	WB
Recommended Dilution:	WB
Reactivity:	Human
Host:	Rabbit
Isotype:	IgG
Clonality:	Polyclonal
Immunogen:	The immunogen for Anti-GUK1 Antibody: synthetic peptide directed towards the middle region of human GUK1. Synthetic peptide located within the following region: IEHAEFSGNLYGTSKVAVQAVQAMNRCVLDVDLQGVRNIKATDLRPIYI
Formulation:	Liquid. Purified antibody supplied in 1x PBS buffer with 0.09% (w/v) sodium azide and 2% sucrose. <i>Note that this product is shipped as lyophilized powder to China customers.</i>
Purification:	Affinity Purified
Conjugation:	Unconjugated
Storage:	Store at -20°C as received.
Stability:	Stable for 12 months from date of receipt.
Predicted Protein Size:	22 kDa
Gene Name:	guanylate kinase 1
Database Link:	NP_000849 Entrez Gene 2987 Human Q16774
Background:	GUK1 is essential for recycling GMP and indirectly, cGMP.
Synonyms:	GMK
Note:	Immunogen Sequence Homology: Dog: 100%; Pig: 100%; Rat: 100%; Horse: 100%; Human: 100%; Mouse: 100%; Bovine: 100%; Rabbit: 100%; Guinea pig: 100%; Yeast: 92%; Zebrafish: 86%

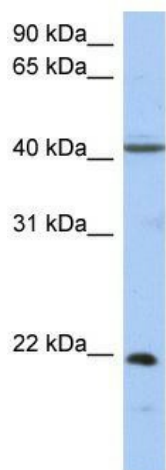


[View online »](#)

Protein Families: Druggable Genome

Protein Pathways: Metabolic pathways, Purine metabolism

Product images:



WB Suggested Anti-GUK1 Antibody Titration: 0.2-1 ug/ml; ELISA Titer: 1: 62500; Positive Control: Human kidney