

Product datasheet for TA336212

IMPDH2 Rabbit Polyclonal Antibody

Product data:

| | |
|-------------------------|---|
| Product Type: | Primary Antibodies |
| Applications: | IF, WB |
| Recommended Dilution: | WB, IF |
| Reactivity: | Human |
| Host: | Rabbit |
| Isotype: | IgG |
| Clonality: | Polyclonal |
| Immunogen: | The immunogen for Anti-IMPDH2 Antibody: synthetic peptide directed towards the N terminal of human IMPDH2. Synthetic peptide located within the following region: MADYLISGGTSYVPDDGLTAQQLFNCGDGLTYNDFLILPGYIDFTADQVD |
| Formulation: | Liquid. Purified antibody supplied in 1x PBS buffer with 0.09% (w/v) sodium azide and 2% sucrose. <i>Note that this product is shipped as lyophilized powder to China customers.</i> |
| Purification: | Affinity Purified |
| Conjugation: | Unconjugated |
| Storage: | Store at -20°C as received. |
| Stability: | Stable for 12 months from date of receipt. |
| Predicted Protein Size: | 56 |
| Gene Name: | IMP (inosine 5'-monophosphate) dehydrogenase 2 |
| Database Link: | NP_000875 Entrez Gene 3615 Human P12268 |
| Background: | IMPDH2 is the rate-limiting enzyme in the de novo guanine nucleotide biosynthesis. It is thus involved in maintaining cellular guanine deoxy- and ribonucleotide pools needed for DNA and RNA synthesis. It catalyzes the NAD-dependent oxidation of inosine-5'-monophosphate into xanthine-5'-monophosphate, which is then converted into guanosine-5'-monophosphate. IMPDH2 is up-regulated in some neoplasms, suggesting it may play a role in malignant transformation. |



[View online »](#)

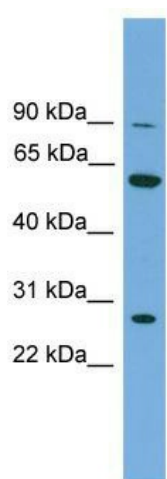
Synonyms: IMPD2; IMPDH-II

Note: Immunogen Sequence Homology: Dog: 100%; Pig: 100%; Rat: 100%; Horse: 100%; Human: 100%; Mouse: 100%; Bovine: 100%; Rabbit: 100%; Guinea pig: 100%; Zebrafish: 86%

Protein Families: Druggable Genome

Protein Pathways: Drug metabolism - other enzymes, Metabolic pathways, Purine metabolism

Product images:



WB Suggested Anti-IMPDH2 Antibody Titration:
0.2-1 ug/ml; ELISA Titer: 1: 312500; Positive
Control: 721_B cell lysate. IMPDH2 is supported
by BioGPS gene expression data to be expressed
in 721_B