

Product datasheet for **TA336203**

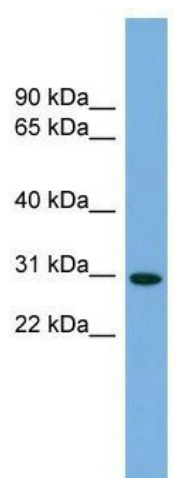
NCCRP1 Rabbit Polyclonal Antibody

Product data:

Product Type:	Primary Antibodies
Applications:	WB
Recommended Dilution:	WB
Reactivity:	Human
Host:	Rabbit
Isotype:	IgG
Clonality:	Polyclonal
Immunogen:	The immunogen for Anti-NCCRP1 Antibody: synthetic peptide directed towards the N terminal of human LOC342897. Synthetic peptide located within the following region: MEEVREGHALGGGMEADGPASLQELPPSPRSPSPPPSPPLPSPPLPSP
Formulation:	Liquid. Purified antibody supplied in 1x PBS buffer with 0.09% (w/v) sodium azide and 2% sucrose.
Purification:	Affinity Purified
Conjugation:	Unconjugated
Storage:	Store at -20°C as received.
Stability:	Stable for 12 months from date of receipt.
Predicted Protein Size:	31
Gene Name:	non-specific cytotoxic cell receptor protein 1 homolog (zebrafish)
Database Link:	NP_001001414 Entrez Gene 342897 Human Q6ZVX7
Background:	The function of this protein remains unknown.
Synonyms:	FBXO50; NCCRP-1
Note:	Immunogen Sequence Homology: Human: 100%
Protein Families:	Druggable Genome



[View online »](#)

Product images:

WB Suggested Anti-NCCRP1 Antibody Titration:
0.2-1 ug/ml; Positive Control: 293T cell lysate