

## Product datasheet for **TA336201**

### FAM166A Rabbit Polyclonal Antibody

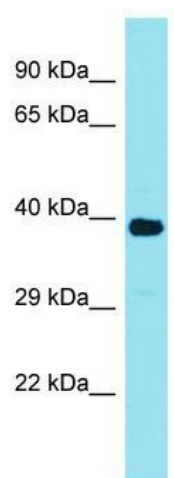
#### Product data:

Product Type:	Primary Antibodies
Applications:	WB
Recommended Dilution:	WB
Reactivity:	Human
Host:	Rabbit
Isotype:	IgG
Clonality:	Polyclonal
Immunogen:	The immunogen for Anti-FAM166A Antibody is: synthetic peptide directed towards the middle region of Human FAM166A. Synthetic peptide located within the following region: FTPDTPHPPCPPGRKGDSDLGHPVYGEEAWKSATPVCEAPRQHQLYHCQ
Formulation:	Liquid. Purified antibody supplied in 1x PBS buffer with 0.09% (w/v) sodium azide and 2% sucrose.
Purification:	Affinity Purified
Conjugation:	Unconjugated
Storage:	Store at -20°C as received.
Stability:	Stable for 12 months from date of receipt.
Predicted Protein Size:	34 kDa
Gene Name:	family with sequence similarity 166 member A
Database Link:	<a href="#">NP_001001710</a> <a href="#">Entrez Gene 401565 Human</a> <a href="#">Q6J272</a>
Background:	The function of this protein remains unknown.
Synonyms:	HSD46
Note:	Immunogen Sequence Homology: Pig: 100%; Human: 100%; Bovine: 100%; Horse: 92%; Dog: 86%; Rat: 86%; Mouse: 86%; Guinea pig: 79%



[View online »](#)

## Product images:



Host: Rabbit; Target Name: FAM166A; Sample  
Tissue: Jurkat Whole Cell lysates; Antibody  
Dilution: 1.0 ug/ml