

Product datasheet for **TA336200**

FAM166A Rabbit Polyclonal Antibody

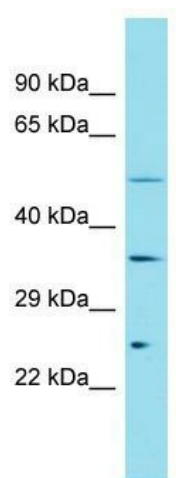
Product data:

Product Type:	Primary Antibodies
Applications:	WB
Recommended Dilution:	WB
Reactivity:	Human
Host:	Rabbit
Isotype:	IgG
Clonality:	Polyclonal
Immunogen:	The immunogen for Anti-FAM166A Antibody is: synthetic peptide directed towards the N-terminal region of Human FAM166A. Synthetic peptide located within the following region: TTGQLLDPSVQKSPCSVLSPMSKPKFIEDFSQSKPPRVPCQDLTEPYIP
Formulation:	Liquid. Purified antibody supplied in 1x PBS buffer with 0.09% (w/v) sodium azide and 2% sucrose.
Purification:	Affinity Purified
Conjugation:	Unconjugated
Storage:	Store at -20°C as received.
Stability:	Stable for 12 months from date of receipt.
Predicted Protein Size:	36 kDa
Gene Name:	family with sequence similarity 166 member A
Database Link:	NP_001001710 Entrez Gene 401565 Human Q6J272
Background:	The function of this protein remains unknown.
Synonyms:	HSD46
Note:	Immunogen Sequence Homology: Human: 100%; Pig: 92%; Rat: 92%; Horse: 92%; Mouse: 92%; Guinea pig: 92%; Dog: 85%; Bovine: 85%



[View online »](#)

Product images:



Host: Rabbit; Target Name: FAM166A; Sample
Tissue: 293T Whole Cell lysates; Antibody
Dilution: 1.0 ug/ml