

Product datasheet for **TA336199**

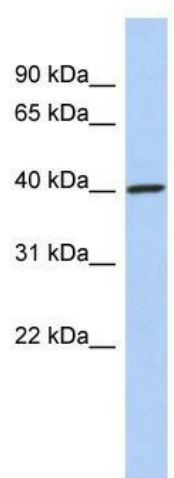
DDI1 Rabbit Polyclonal Antibody

Product data:

Product Type:	Primary Antibodies
Applications:	WB
Recommended Dilution:	WB
Reactivity:	Human
Host:	Rabbit
Isotype:	IgG
Clonality:	Polyclonal
Immunogen:	The immunogen for Anti-DDI1 Antibody: synthetic peptide directed towards the middle region of human DDI1. Synthetic peptide located within the following region: KNVLVIGTTGTQTYFLPEGELPLCSRMVSGQDESSDKEITHSVMDSGRKE
Formulation:	Liquid. Purified antibody supplied in 1x PBS buffer with 0.09% (w/v) sodium azide and 2% sucrose.
Purification:	Affinity Purified
Conjugation:	Unconjugated
Storage:	Store at -20°C as received.
Stability:	Stable for 12 months from date of receipt.
Predicted Protein Size:	44 kDa
Gene Name:	DNA damage inducible 1 homolog 1
Database Link:	NP_001001711 Entrez Gene 414301 Human Q8WTU0
Background:	The specific function of this protein remains unknown
Synonyms:	FLJ36017
Note:	Immunogen Sequence Homology: Human: 100%



[View online »](#)

Product images:


WB Suggested Anti-DDI1 Antibody Titration: 0.2-1 ug/ml; ELISA Titer: 1:62500; Positive Control: Human Placenta