

Product datasheet for **TA336198**

FAM116B (DENND6B) Rabbit Polyclonal Antibody

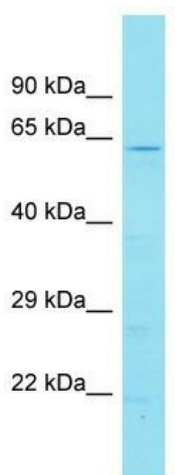
Product data:

Product Type:	Primary Antibodies
Applications:	WB
Recommended Dilution:	WB
Reactivity:	Human
Host:	Rabbit
Isotype:	IgG
Clonality:	Polyclonal
Immunogen:	The immunogen for Anti-DENND6B Antibody is: synthetic peptide directed towards the N-terminal region of Human DENND6B. Synthetic peptide located within the following region: PVALQREPAHYFGYVYFRQVKDSSVKG YFQKSLVLSRLPFVRLFQALL
Formulation:	Liquid. Purified antibody supplied in 1x PBS buffer with 0.09% (w/v) sodium azide and 2% sucrose.
Purification:	Affinity Purified
Conjugation:	Unconjugated
Storage:	Store at -20°C as received.
Stability:	Stable for 12 months from date of receipt.
Predicted Protein Size:	64 kDa
Gene Name:	DENN domain containing 6B
Database Link:	NP_001001794 Entrez Gene 414918 Human Q8NEG7
Background:	DENND6B is a Guanine nucleotide exchange factor (GEF) for RAB14. It also has some, lesser GEF activity towards RAB35.
Synonyms:	AFI1B; FAM116B
Note:	Immunogen Sequence Homology: Dog: 100%; Pig: 100%; Rat: 100%; Horse: 100%; Human: 100%; Mouse: 100%; Bovine: 100%; Rabbit: 100%; Guinea pig: 100%; Zebrafish: 86%



[View online »](#)

Product images:



Host: Rabbit

Target Name: DENND6B

Sample Tissue: 721_B Cell Lysate

Antibody Dilution: 1.0 µg/ml

Host: Rabbit; Target Name: DENND6B; Sample
Tissue: 721_B Whole cell lysates; Antibody
Dilution: 1.0 µg/ml