

Product datasheet for **TA336197**

STX19 Rabbit Polyclonal Antibody

Product data:

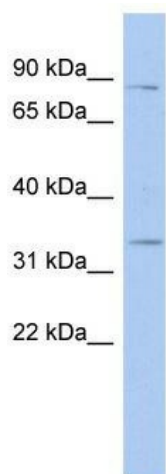
Product Type:	Primary Antibodies
Applications:	WB
Recommended Dilution:	WB
Reactivity:	Human
Host:	Rabbit
Isotype:	IgG
Clonality:	Polyclonal
Immunogen:	The immunogen for Anti-STX19 Antibody: synthetic peptide directed towards the N terminal of human STX19. Synthetic peptide located within the following region: LQQAVIYEREPVAERHLHEIQKLQESINNLADNVQKFGQQKSLVASMRR
Formulation:	Liquid. Purified antibody supplied in 1x PBS buffer with 0.09% (w/v) sodium azide and 2% sucrose. <i>Note that this product is shipped as lyophilized powder to China customers.</i>
Purification:	Affinity Purified
Conjugation:	Unconjugated
Storage:	Store at -20°C as received.
Stability:	Stable for 12 months from date of receipt.
Predicted Protein Size:	34 kDa
Gene Name:	syntaxin 19
Database Link:	NP_001001850 Entrez Gene 415117 Human Q8N4C7
Background:	The specific function of this protein remains unknown.
Synonyms:	MGC21382
Note:	Immunogen Sequence Homology: Dog: 100%; Pig: 100%; Horse: 100%; Human: 100%; Mouse: 100%; Bovine: 100%; Rabbit: 86%; Guinea pig: 86%
Protein Families:	Druggable Genome



[View online »](#)

Protein Pathways: SNARE interactions in vesicular transport

Product images:



WB Suggested Anti-STX19 Antibody Titration: 0.2-1 ug/ml; ELISA Titer: 1:312500; Positive Control: Human Spleen