

Product datasheet for **TA336196**

FAM13C1 (FAM13C) Rabbit Polyclonal Antibody

Product data:

Product Type:	Primary Antibodies
Applications:	WB
Recommended Dilution:	WB
Reactivity:	Human
Host:	Rabbit
Isotype:	IgG
Clonality:	Polyclonal
Immunogen:	The immunogen for Anti-FAM13C1 Antibody: synthetic peptide directed towards the N terminal of human FAM13C1. Synthetic peptide located within the following region: TEHVSSQSECQVRAGTPAHESPQNNAFKQCETVRLQPRIDQRTAISPDK
Formulation:	Liquid. Purified antibody supplied in 1x PBS buffer with 0.09% (w/v) sodium azide and 2% sucrose. <i>Note that this product is shipped as lyophilized powder to China customers.</i>
Purification:	Affinity Purified
Conjugation:	Unconjugated
Storage:	Store at -20°C as received.
Stability:	Stable for 12 months from date of receipt.
Predicted Protein Size:	55 kDa
Gene Name:	family with sequence similarity 13 member C
Database Link:	NP_001001971 Entrez Gene 220965 Human Q8NE31
Background:	FAM13C1 belongs to the FAM13 family. The exact function of FAM13C1 remains unknown.
Synonyms:	FAM13C1
Note:	Immunogen Sequence Homology: Human: 100%; Mouse: 100%; Rabbit: 100%; Dog: 92%; Rat: 92%; Pig: 85%; Guinea pig: 85%



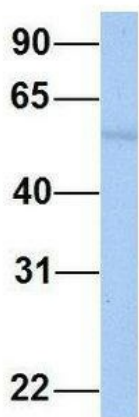
[View online »](#)

Product images:



WB Suggested Anti-FAM13C1 Antibody Titration: 0.2-1 ug/ml; Positive Control: Human Liver

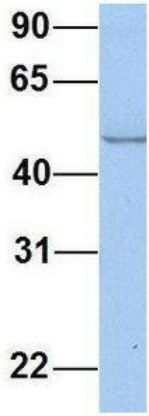
FAM13C



Rabbit Anti-FAM13C
 Sample Type: Human Fetal Muscle
 Antibody Concentration: 1ug/mL

Host: Rabbit; Target Name: FAM13C; Sample Tissue: Human Fetal Muscle; Antibody Dilution: 1.0 ug/ml

FAM13C



Rabbit Anti-FAM13C
Sample Type: Human Fetal Brain
Antibody Concentration: 1ug/mL

Host: Rabbit; Target Name: FAM13C; Sample
Tissue: Human Fetal Brain; Antibody Dilution: 1.0
ug/ml