

Product datasheet for **TA336195**

FAM13C1 (FAM13C) Rabbit Polyclonal Antibody

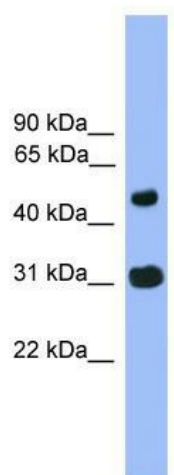
Product data:

Product Type:	Primary Antibodies
Applications:	WB
Recommended Dilution:	WB
Reactivity:	Human
Host:	Rabbit
Isotype:	IgG
Clonality:	Polyclonal
Immunogen:	The immunogen for Anti-FAM13C1 Antibody: synthetic peptide directed towards the N terminal of human FAM13C1. Synthetic peptide located within the following region: RPSMGNFKSRPKSIFKAESGRSHGESQETEHVSSQSECQVRAGTPAHE
Formulation:	Liquid. Purified antibody supplied in 1x PBS buffer with 0.09% (w/v) sodium azide and 2% sucrose.
Purification:	Affinity Purified
Conjugation:	Unconjugated
Storage:	Store at -20°C as received.
Stability:	Stable for 12 months from date of receipt.
Predicted Protein Size:	55 kDa
Gene Name:	family with sequence similarity 13 member C
Database Link:	NP_001001971 Entrez Gene 220965 Human Q8NE31
Background:	The function of FAM13C1 remains unknown.
Synonyms:	FAM13C1
Note:	Immunogen Sequence Homology: Rat: 100%; Human: 100%; Rabbit: 100%; Dog: 93%; Pig: 93%; Mouse: 93%; Bovine: 93%; Guinea pig: 93%



[View online »](#)

Product images:



WB Suggested Anti-FAM13C1 Antibody Titration:
0.2-1 ug/ml; ELISA Titer: 1: 312500; Positive
Control: Human Lung