

Product datasheet for **TA336194**

Host cell factor C1 regulator 1 (HCFC1R1) Rabbit Polyclonal Antibody

Product data:

Product Type:	Primary Antibodies
Applications:	WB
Recommended Dilution:	WB
Reactivity:	Human
Host:	Rabbit
Isotype:	IgG
Clonality:	Polyclonal
Immunogen:	The immunogen for Anti-HCFC1R1 Antibody: synthetic peptide directed towards the middle region of human HCFC1R1. Synthetic peptide located within the following region: LRGAVPMSTKRRLLEEQEPLRKQFLSEENMATHFSQLSLHNDHPYCSPPM
Formulation:	Liquid. Purified antibody supplied in 1x PBS buffer with 0.09% (w/v) sodium azide and 2% sucrose. <i>Note that this product is shipped as lyophilized powder to China customers.</i>
Purification:	Affinity Purified
Conjugation:	Unconjugated
Storage:	Store at -20°C as received.
Stability:	Stable for 12 months from date of receipt.
Predicted Protein Size:	15 kDa
Gene Name:	host cell factor C1 regulator 1
Database Link:	NP_001002018 Entrez Gene 54985 Human Q9NWW0
Background:	HCFC1R1 regulates HCFC1 activity by modulating its subcellular localization. Overexpression of HCFC1R1 leads to accumulation of HCFC1 in the cytoplasm. HCFC1R1-mediated export may provide the pool of cytoplasmic HCFC1 required for import of virion-derived VP16 into the nucleus.
Synonyms:	HPIP

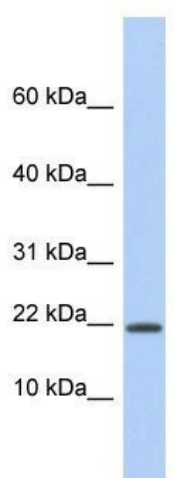


[View online »](#)

Note: Immunogen Sequence Homology: Dog: 100%; Pig: 100%; Horse: 100%; Human: 100%; Bovine: 100%; Goat: 93%; Mouse: 92%; Rat: 83%

Protein Families: Druggable Genome

Product images:



WB Suggested Anti-HCFC1R1 Antibody Titration:
0.2-1 ug/ml; ELISA Titer: 1:312500; Positive
Control: Human Spleen