

Product datasheet for **TA336190**

GRK4 Rabbit Polyclonal Antibody

Product data:

Product Type:	Primary Antibodies
Applications:	WB
Recommended Dilution:	WB
Reactivity:	Human
Host:	Rabbit
Isotype:	IgG
Clonality:	Polyclonal
Immunogen:	The immunogen for Anti-GRK4 Antibody: synthetic peptide directed towards the middle region of human GRK4. Synthetic peptide located within the following region: EKVKWEEVDQRIKNDTEEYSEKFSEDAHSICRMLLTKNPSKRLGCRGEGA
Formulation:	Liquid. Purified antibody supplied in 1x PBS buffer with 0.09% (w/v) sodium azide and 2% sucrose. <i>Note that this product is shipped as lyophilized powder to China customers.</i>
Purification:	Affinity Purified
Conjugation:	Unconjugated
Storage:	Store at -20°C as received.
Stability:	Stable for 12 months from date of receipt.
Predicted Protein Size:	60 kDa
Gene Name:	G protein-coupled receptor kinase 4
Database Link:	NP_001004056 Entrez Gene 2868 Human P32298
Background:	This gene encodes a member of the guanine nucleotide-binding protein (G protein)-coupled receptor kinase subfamily of the Ser/Thr protein kinase family. The protein phosphorylates the activated forms of G protein-coupled receptors thus initiating its deactivation. This gene has been linked to both genetic and acquired hypertension.
Synonyms:	GPRK2L; GPRK4; GRK4a; IT11



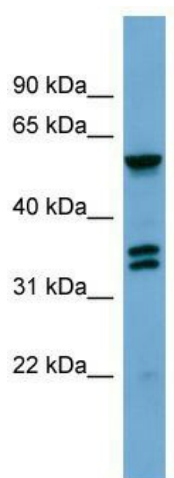
[View online »](#)

Note: Immunogen Sequence Homology: Horse: 100%; Human: 100%; Dog: 92%; Pig: 92%; Rat: 92%; Guinea pig: 92%; Zebrafish: 91%; Mouse: 86%; Bovine: 77%

Protein Families: Druggable Genome, Protein Kinase

Protein Pathways: Chemokine signaling pathway, Endocytosis

Product images:



WB Suggested Anti-GRK4 Antibody Titration: 0.2-1 ug/ml; ELISA Titer: 1: 312500; Positive Control: MCF7 cell lysate