

Product datasheet for TA336188

TUSC1 Rabbit Polyclonal Antibody

Product data:

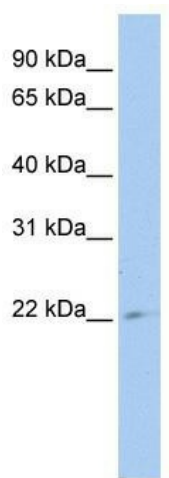
Product Type:	Primary Antibodies
Applications:	WB
Recommended Dilution:	WB
Reactivity:	Human
Host:	Rabbit
Isotype:	IgG
Clonality:	Polyclonal
Immunogen:	The immunogen for Anti-TUSC1 Antibody: synthetic peptide directed towards the middle region of human TUSC1. Synthetic peptide located within the following region: DSGREDEPGSPRALRARLEKLEAMYRRALLQLHLEQRGPRPSGDKEEQPL
Formulation:	Liquid. Purified antibody supplied in 1x PBS buffer with 0.09% (w/v) sodium azide and 2% sucrose.
Purification:	Affinity Purified
Conjugation:	Unconjugated
Storage:	Store at -20°C as received.
Stability:	Stable for 12 months from date of receipt.
Predicted Protein Size:	23 kDa
Gene Name:	tumor suppressor candidate 1
Database Link:	NP_001004125 Entrez Gene 286319 Human Q2TAM9
Background:	Tusc1 gene is located within the region of chromosome 9p that harbors tumor suppressor genes critical in carcinogenesis. It is an intronless gene which is downregulated in non-small-cell lung cancer and small-cell lung cancer cell lines, suggesting that it may play a role in lung tumorigenesis. This gene is located within the region of chromosome 9p that harbors tumor suppressor genes critical in carcinogenesis. It is an intronless gene which is downregulated in non-small-cell lung cancer and small-cell lung cancer cell lines, suggesting that it may play a role in lung tumorigenesis.


[View online »](#)

Synonyms: TSG-9; TSG9

Note: Immunogen Sequence Homology: Human: 100%; Pig: 92%; Mouse: 92%; Bovine: 92%

Product images:



WB Suggested Anti-TUSC1 Antibody Titration: 0.2-1 ug/ml; ELISA Titer: 1: 62500; Positive Control: 721_B cell lysate