

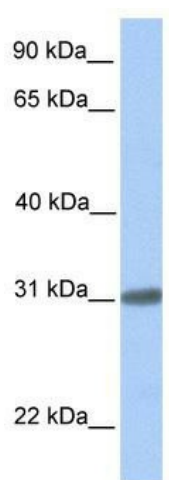
Product datasheet for TA336186

C7orf61 Rabbit Polyclonal Antibody

Product data:

Product Type:	Primary Antibodies
Applications:	WB
Recommended Dilution:	WB
Reactivity:	Human
Host:	Rabbit
Isotype:	IgG
Clonality:	Polyclonal
Immunogen:	The immunogen for Anti-C7orf61 Antibody: synthetic peptide directed towards the C terminal of human LOC402573. Synthetic peptide located within the following region: YLVWAVRKHLRRLYRRQERHRRHHVRCHAAPRPNPAQSLKLDAQSPL
Formulation:	Liquid. Purified antibody supplied in 1x PBS buffer with 0.09% (w/v) sodium azide and 2% sucrose.
Purification:	Affinity Purified
Conjugation:	Unconjugated
Storage:	Store at -20°C as received.
Stability:	Stable for 12 months from date of receipt.
Predicted Protein Size:	24 kDa
Gene Name:	chromosome 7 open reading frame 61
Database Link:	NP_001004323 Entrez Gene 402573 Human Q8IZ16
Background:	The exact function of LOC402573 remains unknown.
Synonyms:	C7orf61
Note:	Immunogen Sequence Homology: Human: 100%


[View online »](#)

Product images:

WB Suggested Anti-C7orf61 Antibody Titration:
0.2-1 ug/ml; Positive Control: Human brain