

Product datasheet for **TA336184**

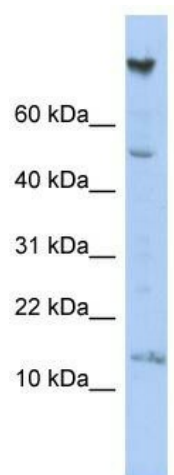
NRARP Rabbit Polyclonal Antibody

Product data:

Product Type:	Primary Antibodies
Applications:	WB
Recommended Dilution:	WB
Reactivity:	Human
Host:	Rabbit
Isotype:	IgG
Clonality:	Polyclonal
Immunogen:	The immunogen for Anti-NRARP Antibody: synthetic peptide directed towards the middle region of human NRARP. Synthetic peptide located within the following region: QNMTNCEFNVNSFGPEGQTALHQSVIDGNLELVKLLVKFGADIRLANRDG
Formulation:	Liquid. Purified antibody supplied in 1x PBS buffer with 0.09% (w/v) sodium azide and 2% sucrose.
Purification:	Affinity Purified
Conjugation:	Unconjugated
Storage:	Store at -20°C as received.
Stability:	Stable for 12 months from date of receipt.
Predicted Protein Size:	12 kDa
Gene Name:	NOTCH-regulated ankyrin repeat protein
Database Link:	NP_001004354 Entrez Gene 441478 Human Q7Z6K4
Background:	NRARP may play a role in the formation of somites.
Synonyms:	MGC61598
Note:	Immunogen Sequence Homology: Dog: 100%; Pig: 100%; Rat: 100%; Human: 100%; Mouse: 100%; Bovine: 100%; Zebrafish: 100%



[View online »](#)

Product images:

WB Suggested Anti-NRARP Antibody Titration:
0.2-1 ug/ml; ELISA Titer: 1:312500; Positive
Control: HepG2 cell lysate