

Product datasheet for TA336182

CLEC2D Rabbit Polyclonal Antibody

Product data:

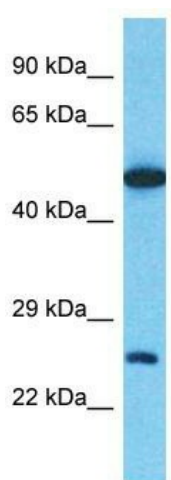
Product Type:	Primary Antibodies
Applications:	WB
Recommended Dilution:	WB
Reactivity:	Human
Host:	Rabbit
Isotype:	IgG
Clonality:	Polyclonal
Immunogen:	The immunogen for Anti-CLEC2D Antibody is: synthetic peptide directed towards the C-terminal region of Human CLEC2D. Synthetic peptide located within the following region: GQPWKWINGTEWTRQLVMKEDGANLYVAKVSQVPRMNPVMVSYPGSRR
Formulation:	Liquid. Purified antibody supplied in 1x PBS buffer with 0.09% (w/v) sodium azide and 2% sucrose. <i>Note that this product is shipped as lyophilized powder to China customers.</i>
Purification:	Affinity Purified
Conjugation:	Unconjugated
Storage:	Store at -20°C as received.
Stability:	Stable for 12 months from date of receipt.
Predicted Protein Size:	21 kDa
Gene Name:	C-type lectin domain family 2 member D
Database Link:	NP_001004419 Entrez Gene 29121 Human Q9UHP7
Background:	This gene encodes a member of the natural killer cell receptor C-type lectin family. The encoded protein inhibits osteoclast formation and contains a transmembrane domain near the N-terminus as well as the C-type lectin-like extracellular domain. Several alternatively spliced transcript variants have been identified for this gene.
Synonyms:	CLAX; LLT1; OCIL
Note:	Immunogen Sequence Homology: Human: 100%



[View online »](#)

Protein Families: Druggable Genome, Transmembrane

Product images:



Host: Rabbit
Target Name: CLEC2D
Sample Tissue: Thymus Tumor Lysate
Antibody Dilution: 1.0 μ g/ml

Host: Rabbit; Target Name: CLEC2D; Sample Tissue: Thymus Tumor lysates; Antibody Dilution: 1.0 ug/ml