

Product datasheet for **TA336178**

ST8SIA6 Rabbit Polyclonal Antibody

Product data:

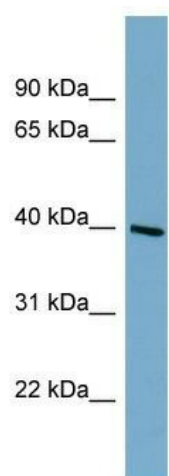
Product Type:	Primary Antibodies
Applications:	WB
Recommended Dilution:	WB
Reactivity:	Human
Host:	Rabbit
Isotype:	IgG
Clonality:	Polyclonal
Immunogen:	The immunogen for Anti-ST8SIA6 Antibody: synthetic peptide directed towards the middle region of human ST8SIA6. Synthetic peptide located within the following region: LEESKARQKVLFFHPKYLKDLALFWRTKGVTA YRLSTGLMITSVAVELCK
Formulation:	Liquid. Purified antibody supplied in 1x PBS buffer with 0.09% (w/v) sodium azide and 2% sucrose. <i>Note that this product is shipped as lyophilized powder to China customers.</i>
Purification:	Affinity Purified
Conjugation:	Unconjugated
Storage:	Store at -20°C as received.
Stability:	Stable for 12 months from date of receipt.
Predicted Protein Size:	45 kDa
Gene Name:	ST8 alpha-N-acetyl-neuraminide alpha-2,8-sialyltransferase 6
Database Link:	NP_001004470 Entrez Gene 338596 Human P61647
Background:	Sialic acid is a key determinate of oligosaccharide structures involved in cell-cell communication, cell-substrate interaction, adhesion, and protein targeting. ST8SIA6 belongs to a family of sialyltransferases (EC 2.4.99.8) that synthesize sialylglycocon
Synonyms:	SIA8F; SIAT8-F; SIAT8F; ST8SIA-VI; ST8SiaVI
Note:	Immunogen Sequence Homology: Rat: 100%; Human: 100%; Mouse: 100%; Rabbit: 100%; Pig: 92%; Guinea pig: 92%; Horse: 86%; Bovine: 86%



[View online »](#)

Protein Families: Transmembrane

Product images:



WB Suggested Anti-ST8SIA6 Antibody Titration:
0.2-1 ug/ml; Positive Control: HT1080 cell lysate