

## Product datasheet for TA336177

### OR2W5P Rabbit Polyclonal Antibody

#### Product data:

<b>Product Type:</b>	Primary Antibodies
<b>Applications:</b>	WB
<b>Recommended Dilution:</b>	WB
<b>Reactivity:</b>	Human
<b>Host:</b>	Rabbit
<b>Isotype:</b>	IgG
<b>Clonality:</b>	Polyclonal
<b>Immunogen:</b>	The immunogen for Anti-OR2W5 Antibody: synthetic peptide directed towards the middle region of human OR2W5. Synthetic peptide located within the following region: SGEVPDSSLHHRHSQHQPPLHFEEQGCEGDHEETSGVGERGWGASTRGT
<b>Formulation:</b>	Liquid. Purified antibody supplied in 1x PBS buffer with 0.09% (w/v) sodium azide and 2% sucrose.
<b>Purification:</b>	Affinity Purified
<b>Conjugation:</b>	Unconjugated
<b>Storage:</b>	Store at -20°C as received.
<b>Stability:</b>	Stable for 12 months from date of receipt.
<b>Predicted Protein Size:</b>	35 kDa
<b>Gene Name:</b>	olfactory receptor family 2 subfamily W member 5 (gene/pseudogene)
<b>Database Link:</b>	<a href="#">NP_001004698</a> <a href="#">Entrez Gene 441932 Human</a> <a href="#">A6NFC9</a>



**Background:**

Olfactory receptors interact with odorant molecules in the nose, to initiate a neuronal response that triggers the perception of a smell. The olfactory receptor proteins are members of a large family of G-protein-coupled receptors (GPCR) arising from single coding-exon genes. Olfactory receptors share a 7-transmembrane domain structure with many neurotransmitter and hormone receptors and are responsible for the recognition and G protein-mediated transduction of odorant signals. The olfactory receptor gene family is the largest in the genome. The nomenclature assigned to the olfactory receptor genes and proteins for this organism is independent of other organisms. This olfactory receptor gene has a coding sequence that is comparable in length to other olfactory receptor genes, but it should be noted that a frameshift is present in the 3' coding region that disrupts the 7-transmembrane domain structure in the protein. It is unclear if the protein can function as an olfactory receptor or if an alternate function is served. For this reason, this gene has also been interpreted to be a pseudogene.

**Synonyms:**

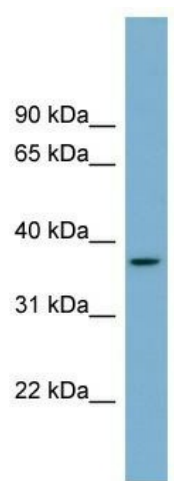
OR2W5P; OST722

**Note:**

Immunogen Sequence Homology: Human: 100%

**Protein Families:**

Transmembrane

**Product images:**

WB Suggested Anti-OR2W5 Antibody Titration:  
0.2-1 ug/ml; Positive Control: Human Small  
Intestine