

## Product datasheet for **TA336176**

### LRRC52 Rabbit Polyclonal Antibody

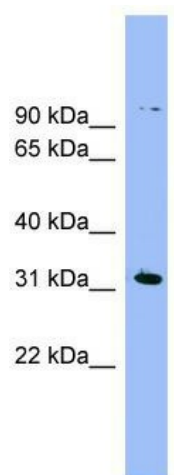
#### Product data:

Product Type:	Primary Antibodies
Applications:	WB
Recommended Dilution:	WB
Reactivity:	Human
Host:	Rabbit
Isotype:	IgG
Clonality:	Polyclonal
Immunogen:	The immunogen for Anti-LRRC52 Antibody: synthetic peptide directed towards the N terminal of human LRRC52. Synthetic peptide located within the following region: QEVICTGKQLTEYPLDIPLNTRRLFLNENRITSLPAMHLGLLSDLVYLDC
Formulation:	Liquid. Purified antibody supplied in 1x PBS buffer with 0.09% (w/v) sodium azide and 2% sucrose. <i>Note that this product is shipped as lyophilized powder to China customers.</i>
Purification:	Affinity Purified
Conjugation:	Unconjugated
Storage:	Store at -20°C as received.
Stability:	Stable for 12 months from date of receipt.
Predicted Protein Size:	35 kDa
Gene Name:	leucine rich repeat containing 52
Database Link:	<a href="#">NP_001005214</a> <a href="#">Entrez Gene 440699 Human</a> <a href="#">Q8N7C0</a>
Background:	The function of this protein remains unknown.
Synonyms:	FLJ25811
Note:	Immunogen Sequence Homology: Human: 100%; Rabbit: 93%; Pig: 92%; Rat: 92%; Bovine: 92%; Mouse: 83%; Guinea pig: 83%; Dog: 75%; Horse: 75%
Protein Families:	Transmembrane



[View online »](#)

## Product images:



WB Suggested Anti-LRRC52 Antibody Titration:  
0.2-1 ug/ml; Positive Control: PANC1 cell lysate