

Product datasheet for TA336175

GPNMB Rabbit Polyclonal Antibody

Product data:

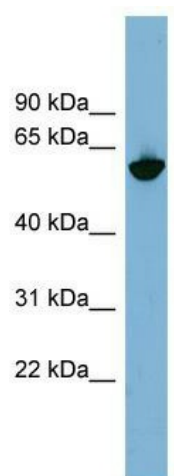
Product Type:	Primary Antibodies
Applications:	WB
Recommended Dilution:	WB
Reactivity:	Human
Host:	Rabbit
Isotype:	IgG
Clonality:	Polyclonal
Immunogen:	The immunogen for Anti-GPNMB Antibody: synthetic peptide directed towards the N terminal of human GPNMB. Synthetic peptide located within the following region: DGENGTGQSHHNVPDGKPFPHPGWRRWNFIYVFHTLQYFQKLGRCVS
Formulation:	Liquid. Purified antibody supplied in 1x PBS buffer with 0.09% (w/v) sodium azide and 2% sucrose. <i>Note that this product is shipped as lyophilized powder to China customers.</i>
Purification:	Affinity Purified
Conjugation:	Unconjugated
Storage:	Store at -20°C as received.
Stability:	Stable for 12 months from date of receipt.
Predicted Protein Size:	62 kDa
Gene Name:	glycoprotein nmb
Database Link:	NP_001005340 Entrez Gene 10457 Human Q14956
Background:	GPNMB is a type I transmembrane glycoprotein which shows homology to the pMEL17 precursor, a melanocyte-specific protein. GPNMB shows expression in the lowly metastatic human melanoma cell lines and xenografts but does not show expression in the highly me
Synonyms:	HGFIN; NMB
Note:	Immunogen Sequence Homology: Pig: 100%; Rat: 100%; Human: 100%; Mouse: 100%; Bovine: 100%; Horse: 93%; Guinea pig: 87%; Dog: 86%



[View online »](#)

Protein Families: Druggable Genome, Transmembrane

Product images:



WB Suggested Anti-GPNMB Antibody Titration:
0.2-1 ug/ml; Positive Control: PANC1 cell lysate