

## Product datasheet for **TA336173**

### **B4GALT3 (B4GALT2) Rabbit Polyclonal Antibody**

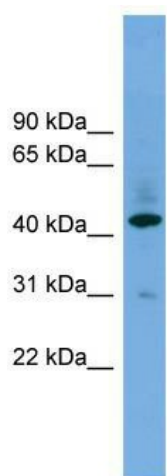
#### **Product data:**

Product Type:	Primary Antibodies
Applications:	WB
Recommended Dilution:	WB
Reactivity:	Human
Host:	Rabbit
Isotype:	IgG
Clonality:	Polyclonal
Immunogen:	The immunogen for Anti-B4GALT2 Antibody: synthetic peptide directed towards the middle region of human B4GALT2. Synthetic peptide located within the following region: AGYFGGVSGLSKAQFLRINGFPNEYWGWGGEDDDIFNRISLTGMKISRPD
Formulation:	Liquid. Purified antibody supplied in 1x PBS buffer with 0.09% (w/v) sodium azide and 2% sucrose. <i>Note that this product is shipped as lyophilized powder to China customers.</i>
Purification:	Affinity Purified
Conjugation:	Unconjugated
Storage:	Store at -20°C as received.
Stability:	Stable for 12 months from date of receipt.
Predicted Protein Size:	42
Gene Name:	beta-1,4-galactosyltransferase 2
Database Link:	<a href="#">NP_001005417</a> <a href="#">Entrez Gene 8704 Human</a> <a href="#">O60909</a>



[View online »](#)

- Background:** This gene is one of seven beta-1,4-galactosyltransferase (beta4GalT) genes. They encode type II membrane-bound glycoproteins that appear to have exclusive specificity for the donor substrate UDP-galactose; all transfer galactose in a beta1,4 linkage to similar acceptor sugars: GlcNAc, Glc, and Xyl. Each beta4GalT has a distinct function in the biosynthesis of different glycoconjugates and saccharide structures. As type II membrane proteins, they have an N-terminal hydrophobic signal sequence that directs the protein to the Golgi apparatus and which then remains uncleaved to function as a transmembrane anchor. By sequence similarity, the beta4GalTs form four groups: beta4GalT1 and beta4GalT2, beta4GalT3 and beta4GalT4, beta4GalT5 and beta4GalT6, and beta4GalT7. The enzyme encoded by this gene synthesizes N-acetyllactosamine in glycolipids and glycoproteins. Its substrate specificity is affected by alpha-lactalbumin but it is not expressed in lactating mammary tissue. Two transcript variants encoding the same protein have been found for this gene.
- Synonyms:** B4Gal-T2; B4Gal-T3; beta4Gal-T2
- Note:** Immunogen Sequence Homology: Dog: 100%; Pig: 100%; Rat: 100%; Horse: 100%; Human: 100%; Mouse: 100%; Bovine: 100%; Rabbit: 100%; Zebrafish: 100%; Guinea pig: 100%; Goat: 90%; Sheep: 90%
- Protein Families:** Transmembrane
- Protein Pathways:** Galactose metabolism, Glycosphingolipid biosynthesis - lacto and neolacto series, Keratan sulfate biosynthesis, Metabolic pathways, N-Glycan biosynthesis

**Product images:**

WB Suggested Anti-B4GALT2 Antibody Titration: 0.2-1 ug/ml; Positive Control: 293T cell lysate. B4GALT2 is supported by BioGPS gene expression data to be expressed in HEK293T