

## Product datasheet for **TA336164**

### ATP8B2 Rabbit Polyclonal Antibody

#### Product data:

Product Type:	Primary Antibodies
Applications:	WB
Recommended Dilution:	WB
Reactivity:	Human
Host:	Rabbit
Isotype:	IgG
Clonality:	Polyclonal
Immunogen:	The immunogen for Anti-ATP8B2 Antibody: synthetic peptide directed towards the N terminal of human ATP8B2. Synthetic peptide located within the following region: KTSKYNILTFLPVNLFQFQEVANTYFLFLLILQLIPQISSLSWFTTIVP
Formulation:	Liquid. Purified antibody supplied in 1x PBS buffer with 0.09% (w/v) sodium azide and 2% sucrose. <i>Note that this product is shipped as lyophilized powder to China customers.</i>
Purification:	Affinity Purified
Conjugation:	Unconjugated
Storage:	Store at -20°C as received.
Stability:	Stable for 12 months from date of receipt.
Predicted Protein Size:	44
Gene Name:	ATPase phospholipid transporting 8B2
Database Link:	<a href="#">NP_001005855</a> <a href="#">Entrez Gene 57198 Human</a> <a href="#">P98198</a>
Background:	The protein encoded by this gene belongs to the family of P-type cation transport ATPases, and to the subfamily of aminophospholipid-transporting ATPases. The aminophospholipid translocases transport phosphatidylserine and phosphatidylethanolamine from one side of a bilayer to another. Alternatively spliced transcript variants encoding different isoforms have been identified.
Synonyms:	ATPID

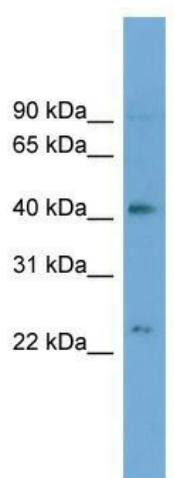


[View online »](#)

**Note:** Immunogen Sequence Homology: Dog: 100%; Pig: 100%; Rat: 100%; Horse: 100%; Human: 100%; Mouse: 100%; Bovine: 100%; Rabbit: 100%; Zebrafish: 100%; Guinea pig: 100%

**Protein Families:** Transmembrane

**Product images:**



WB Suggested Anti-ATP8B2 Antibody Titration:  
0.2-1 ug/ml; Positive Control: HepG2 cell lysate