

Product datasheet for **TA336162**

RPS3A Rabbit Polyclonal Antibody

Product data:

Product Type:	Primary Antibodies
Applications:	WB
Recommended Dilution:	WB
Reactivity:	Human, Arabidopsis thaliana
Host:	Rabbit
Isotype:	IgG
Clonality:	Polyclonal
Immunogen:	The immunogen for Anti-RPS3A Antibody: synthetic peptide directed towards the N terminal of human RPS3A. Synthetic peptide located within the following region: APAMFNIRNIGKTLVTRTQGTKIASDGLKGRVFEVSLADLQNDEVAFRKF
Formulation:	Liquid. Purified antibody supplied in 1x PBS buffer with 0.09% (w/v) sodium azide and 2% sucrose. <i>Note that this product is shipped as lyophilized powder to China customers.</i>
Purification:	Affinity Purified
Conjugation:	Unconjugated
Storage:	Store at -20°C as received.
Stability:	Stable for 12 months from date of receipt.
Predicted Protein Size:	30 kDa
Gene Name:	ribosomal protein S3A
Database Link:	NP_000997 Entrez Gene 6189 Human P61247



[View online »](#)

Background:

RPS3A may play a role during erythropoiesis through regulation of transcription factor DDIT3. Ribosomes, the organelles that catalyze protein synthesis, consist of a small 40S subunit and a large 60S subunit. Together these subunits are composed of 4 RNA species and approximately 80 structurally distinct proteins. This gene encodes a ribosomal protein that is a component of the 40S subunit. The protein belongs to the S3AE family of ribosomal proteins. It is located in the cytoplasm. Disruption of the gene encoding rat ribosomal protein S3a, also named v-fos transformation effector protein, in v-fos-transformed rat cells results in reversion of the transformed phenotype. Transcript variants utilizing alternative transcription start sites have been described. This gene is co-transcribed with the U73A and U73B small nucleolar RNA genes, which are located in its fourth and third introns, respectively. As is typical for genes encoding ribosomal proteins, there are multiple processed pseudogenes of this gene dispersed through the genome. Publication Note: This RefSeq record includes a subset of the publications that are available for this gene. Please see the Entrez Gene record to access additional publications.

Synonyms:

FTE1; MFTL; S3A

Note:

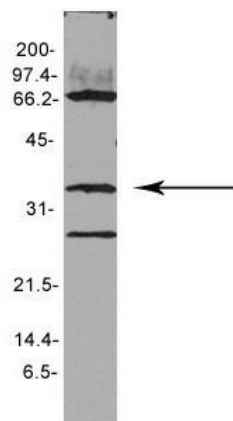
Immunogen Sequence Homology: Dog: 100%; Pig: 100%; Rat: 100%; Horse: 100%; Human: 100%; Mouse: 100%; Bovine: 100%; Rabbit: 100%; Zebrafish: 100%; Guinea pig: 100%

Protein Pathways:

Ribosome

Product images:

WB Suggested Anti-RPS3A Antibody Titration: 0.2-1 ug/ml; ELISA Titer: 1:1562500; Positive Control: Human Liver

RPS3A

Sample Type: Arabidopsis thaliana extract (30ug);
Primary Diltution: 1:1000; Secondary Antibody:
anti-rabbit HRP; Secondary Dilution: 1:15,000;
Exposure Time: 1 minute; Image Submitted By:
Anonymous