

## Product datasheet for **TA336161**

### WDR33 Rabbit Polyclonal Antibody

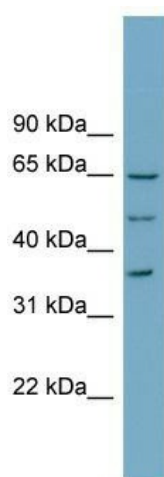
#### Product data:

Product Type:	Primary Antibodies
Applications:	WB
Recommended Dilution:	WB
Reactivity:	Human
Host:	Rabbit
Isotype:	IgG
Clonality:	Polyclonal
Immunogen:	The immunogen for Anti-WDR33 Antibody: synthetic peptide directed towards the N terminal of human WDR33. Synthetic peptide located within the following region: IWQRDQRDMRAIQPDAGYYNDLVPPIGMLNPNMNAVTTKFVRTSTNKVKC
Formulation:	Liquid. Purified antibody supplied in 1x PBS buffer with 0.09% (w/v) sodium azide and 2% sucrose. <i>Note that this product is shipped as lyophilized powder to China customers.</i>
Purification:	Affinity Purified
Conjugation:	Unconjugated
Storage:	Store at -20°C as received.
Stability:	Stable for 12 months from date of receipt.
Predicted Protein Size:	38 kDa
Gene Name:	WD repeat domain 33
Database Link:	<a href="#">NP_001006623</a> <a href="#">Entrez Gene 55339 Human</a> <a href="#">Q9C0J8</a>



[View online »](#)

<b>Background:</b>	WDR33 is a member of the WD repeat protein family. WD repeats are minimally conserved regions of approximately 40 amino acids typically bracketed by gly-his and trp-asp (GH-WD), which may facilitate formation of heterotrimeric or multiprotein complexes. Members of this family are involved in a variety of cellular processes, including cell cycle progression, signal transduction, apoptosis, and gene regulation. This gene is highly expressed in testis and the protein is localized to the nucleus. This gene may play important roles in the mechanisms of cytodifferentiation and/or DNA recombination.
<b>Synonyms:</b>	NET14; WDC146
<b>Note:</b>	Immunogen Sequence Homology: Dog: 100%; Pig: 100%; Rat: 100%; Horse: 100%; Human: 100%; Mouse: 100%; Bovine: 100%; Rabbit: 100%; Guinea pig: 100%; Zebrafish: 79%
<b>Protein Families:</b>	Stem cell - Pluripotency

**Product images:**

WB Suggested Anti-WDR33 Antibody Titration:  
0.2-1 ug/ml; Positive Control: THP-1 cell lysate