

Product datasheet for **TA336159**

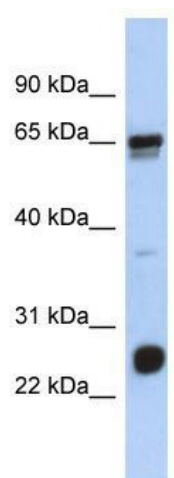
C1orf103 (LRIF1) Rabbit Polyclonal Antibody

Product data:

| | |
|-------------------------|--|
| Product Type: | Primary Antibodies |
| Applications: | WB |
| Recommended Dilution: | WB |
| Reactivity: | Human |
| Host: | Rabbit |
| Isotype: | IgG |
| Clonality: | Polyclonal |
| Immunogen: | The immunogen for Anti-C1orf103 Antibody: synthetic peptide directed towards the N terminal of human C1orf103. Synthetic peptide located within the following region: KKIFGLTKDLRVCLTRIPDHLTSGEGFDSFSSLVKSGTYKETEFMVKEGE |
| Formulation: | Liquid. Purified antibody supplied in 1x PBS buffer with 0.09% (w/v) sodium azide and 2% sucrose. <i>Note that this product is shipped as lyophilized powder to China customers.</i> |
| Purification: | Affinity Purified |
| Conjugation: | Unconjugated |
| Storage: | Store at -20°C as received. |
| Stability: | Stable for 12 months from date of receipt. |
| Predicted Protein Size: | 27 kDa |
| Gene Name: | ligand dependent nuclear receptor interacting factor 1 |
| Database Link: | NP_001006946 Entrez Gene 55791 Human Q5T3J3 |
| Background: | The specific function of this protein remains unknown. |
| Synonyms: | C1orf103; RIF1 |
| Note: | Immunogen Sequence Homology: Human: 100%; Horse: 93%; Rat: 90%; Dog: 86%; Pig: 86%; Mouse: 79%; Rabbit: 79%; Guinea pig: 79% |
| Protein Families: | Stem cell - Pluripotency |



[View online »](#)

Product images:

WB Suggested Anti-C1orf103 Antibody Titration:
0.2-1 ug/ml; ELISA Titer: 1:312500; Positive
Control: Human Placenta