

Product datasheet for **TA336157**

ODF2L Rabbit Polyclonal Antibody

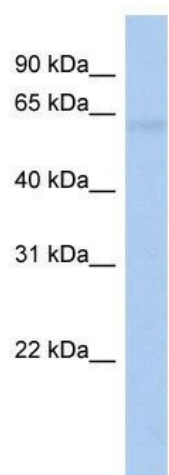
Product data:

Product Type:	Primary Antibodies
Applications:	WB
Recommended Dilution:	WB
Reactivity:	Human
Host:	Rabbit
Isotype:	IgG
Clonality:	Polyclonal
Immunogen:	The immunogen for Anti-ODF2L Antibody: synthetic peptide directed towards the N terminal of human ODF2L. Synthetic peptide located within the following region: KTVALKKASKVYKQRLDHFTGAIEKLTSQIRDQEAKLSETISASNAWKSH
Formulation:	Liquid. Purified antibody supplied in 1x PBS buffer with 0.09% (w/v) sodium azide and 2% sucrose.
Purification:	Affinity Purified
Conjugation:	Unconjugated
Storage:	Store at -20°C as received.
Stability:	Stable for 12 months from date of receipt.
Predicted Protein Size:	60 kDa
Gene Name:	outer dense fiber of sperm tails 2 like
Database Link:	NP_001007023 Entrez Gene 57489 Human Q9ULJ1
Background:	The specific function of this protein remains unknown.
Synonyms:	dj977L11.1
Note:	Immunogen Sequence Homology: Dog: 100%; Pig: 100%; Rat: 100%; Horse: 100%; Human: 100%; Rabbit: 100%; Guinea pig: 100%; Bovine: 93%; Mouse: 92%; Yeast: 90%



[View online »](#)

Product images:



WB Suggested Anti-ODF2L Antibody Titration: 0.2-1 ug/ml; ELISA Titer: 1:312500; Positive Control: 721_B cell lysate