

Product datasheet for TA336156

DECTIN 2 (CLEC6A) Rabbit Polyclonal Antibody

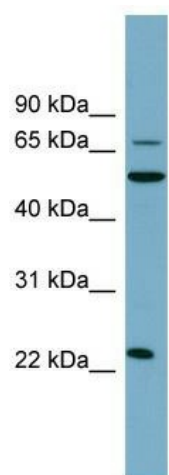
Product data:

Product Type:	Primary Antibodies
Applications:	WB
Recommended Dilution:	WB
Reactivity:	Human
Host:	Rabbit
Isotype:	IgG
Clonality:	Polyclonal
Immunogen:	The immunogen for Anti-CLEC6A Antibody: synthetic peptide directed towards the N terminal of human CLEC6A. Synthetic peptide located within the following region: FIVSCVITYHFTYGETGKRLSELHSYHSSLTCFSEGTKVPAWGCCPASWK
Formulation:	Liquid. Purified antibody supplied in 1x PBS buffer with 0.09% (w/v) sodium azide and 2% sucrose. <i>Note that this product is shipped as lyophilized powder to China customers.</i>
Purification:	Affinity Purified
Conjugation:	Unconjugated
Storage:	Store at -20°C as received.
Stability:	Stable for 12 months from date of receipt.
Predicted Protein Size:	24 kDa
Gene Name:	C-type lectin domain family 6 member A
Database Link:	NP_001007034 Entrez Gene 93978 Human Q6EIG7
Background:	CLEC6A may be involved in regulating immune reactivity.
Synonyms:	CLEC4N; CLECSF10
Note:	Immunogen Sequence Homology: Human: 100%; Rat: 90%; Mouse: 90%; Bovine: 85%
Protein Families:	Transmembrane



[View online »](#)

Product images:



WB Suggested Anti-CLEC6A Antibody Titration:
0.2-1 ug/ml; Positive Control: THP-1 cell lysate