

Product datasheet for **TA336152**

Glycoprotein 2 (GP2) Rabbit Polyclonal Antibody

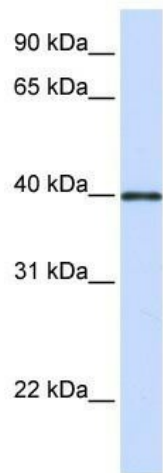
Product data:

Product Type:	Primary Antibodies
Applications:	IHC, WB
Recommended Dilution:	WB, IHC
Reactivity:	Human
Host:	Rabbit
Isotype:	IgG
Clonality:	Polyclonal
Immunogen:	The immunogen for Anti-GP2 Antibody: synthetic peptide directed towards the middle region of human GP2. Synthetic peptide located within the following region: SLQAALQPIVSSLNVSVDGNGEFIVRMALFQDQNYTNPYEGDAVELSVES
Formulation:	Liquid. Purified antibody supplied in 1x PBS buffer with 0.09% (w/v) sodium azide and 2% sucrose.
Purification:	Affinity Purified
Conjugation:	Unconjugated
Storage:	Store at -20°C as received.
Stability:	Stable for 12 months from date of receipt.
Predicted Protein Size:	43 kDa
Gene Name:	glycoprotein 2
Database Link:	NP_001007242 Entrez Gene 2813 Human P55259
Background:	GP2 is component of pancreatic secretory (zymogen) granule. The exact function of GP2 remains unknown.
Synonyms:	ZAP75
Note:	Immunogen Sequence Homology: Human: 100%; Rat: 92%; Horse: 92%; Mouse: 92%; Pig: 79%; Bovine: 79%
Protein Families:	Druggable Genome, Secreted Protein, Transmembrane



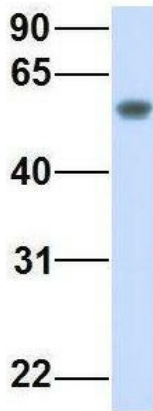
[View online »](#)

Product images:



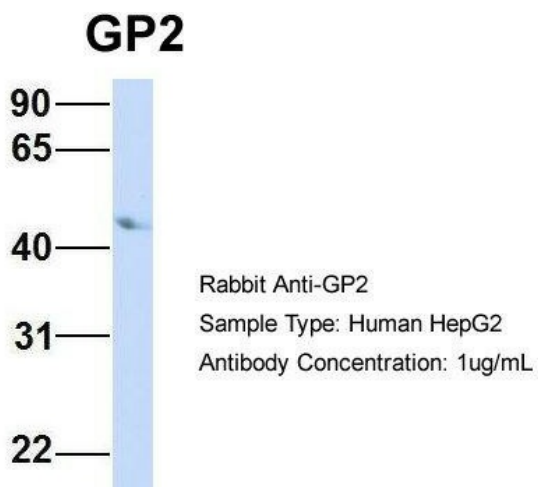
WB Suggested Anti-GP2 Antibody Titration: 0.2-1 ug/ml; ELISA Titer: 1: 312500; Positive Control: Human heart

GP2

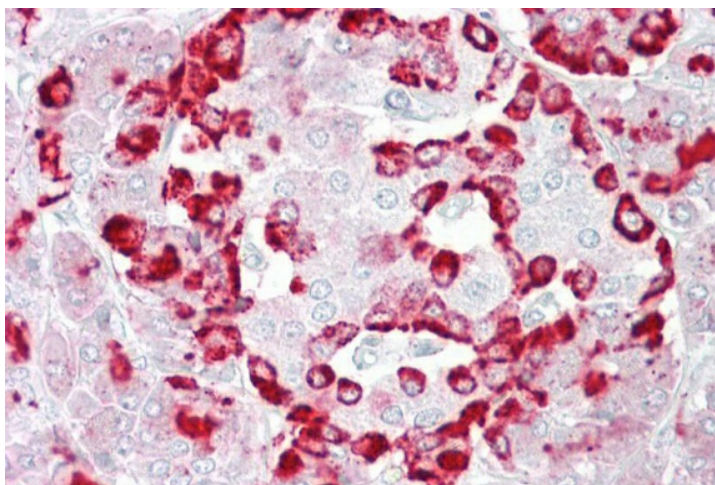


Rabbit Anti-GP2
Sample Type: Human Fetal Muscle
Antibody Concentration: 1ug/mL

3Hum. Fetal Muscle; Host: Rabbit; Target Name: GP2; Sample Tissue: Human Fetal Muscle; Antibody Dilution: 1.0 ug/ml



4Human HepG2; Host: Rabbit; Target Name: GP2; Sample Tissue: HepG2; Antibody Dilution: 1.0 ug/ml. There is BioGPS gene expression data showing that GP2 is expressed in HepG2



Anti-GP2 antibody IHC staining of human pancreas. Immunohistochemistry of formalin-fixed, paraffin-embedded tissue after heat-induced antigen retrieval. Antibody concentration 5 ug/ml.