

Product datasheet for **TA336151**

SNF5 (SMARCB1) Rabbit Polyclonal Antibody

Product data:

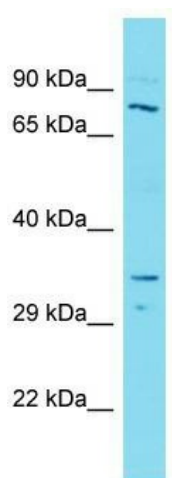
Product Type:	Primary Antibodies
Applications:	WB
Recommended Dilution:	WB
Reactivity:	Human
Host:	Rabbit
Isotype:	IgG
Clonality:	Polyclonal
Immunogen:	The immunogen for Anti-SMARCB1 Antibody is: synthetic peptide directed towards the N-terminal region of Human SMARCB1. Synthetic peptide located within the following region: MMALSKTFGQKPVKFKLEDDGEFYMIGSEVGNLYLRMFRGSLYKRYPSLWR
Formulation:	Liquid. Purified antibody supplied in 1x PBS buffer with 0.09% (w/v) sodium azide and 2% sucrose. <i>Note that this product is shipped as lyophilized powder to China customers.</i>
Purification:	Affinity Purified
Conjugation:	Unconjugated
Storage:	Store at -20°C as received.
Stability:	Stable for 12 months from date of receipt.
Predicted Protein Size:	37 kDa
Gene Name:	SWI/SNF related, matrix associated, actin dependent regulator of chromatin, subfamily b, member 1
Database Link:	NP_001007469 Entrez Gene 6598 Human Q12824
Background:	The function of this protein remains unknown.
Synonyms:	BAF47; CSS3; hSNFS; INI1; MRD15; PPP1R144; RDT; RTPS1; Sfh1p; SNF5; SNF5L1; Snr1; SWNTS1
Note:	Immunogen Sequence Homology: Dog: 100%; Pig: 100%; Rat: 100%; Human: 100%; Mouse: 100%; Bovine: 100%; Guinea pig: 100%; Zebrafish: 86%



[View online »](#)

Protein Families: Transcription Factors

Product images:



Host: Rabbit; Target Name: SMARCB1; Sample Tissue: Lymph Node Tumor lysates; Antibody Dilution: 1.0 ug/ml