

## Product datasheet for TA336149

### CISD2 Rabbit Polyclonal Antibody

#### Product data:

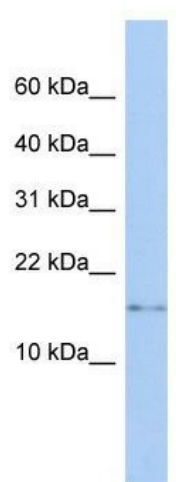
Product Type:	Primary Antibodies
Applications:	WB
Recommended Dilution:	WB
Reactivity:	Human
Host:	Rabbit
Isotype:	IgG
Clonality:	Polyclonal
Immunogen:	The immunogen for Anti-CISD2 Antibody: synthetic peptide directed towards the N terminal of human CISD2. Synthetic peptide located within the following region: VLESVARIVKVQLPAYLKRRLVPESITGFARLTVSEWLRLLPFLGVLALL
Formulation:	Liquid. Purified antibody supplied in 1x PBS buffer with 0.09% (w/v) sodium azide and 2% sucrose. <i>Note that this product is shipped as lyophilized powder to China customers.</i>
Purification:	Affinity Purified
Conjugation:	Unconjugated
Storage:	Store at -20°C as received.
Stability:	Stable for 12 months from date of receipt.
Predicted Protein Size:	15 kDa
Gene Name:	CDGSH iron sulfur domain 2
Database Link:	<a href="#">NP_001008389</a> <a href="#">Entrez Gene 493856 Human</a> <a href="#">Q8N5K1</a>
Background:	CISD2 is a zinc finger protein that localizes to the endoplasmic reticulum. It binds an iron/sulfur cluster and may be involved in calcium homeostasis. Defects in this gene are a cause of Wolfram syndrome 2 (WFS2).
Synonyms:	ERIS; Miner1; NAF-1; WFS2; ZCD2
Note:	Immunogen Sequence Homology: Dog: 100%; Pig: 100%; Rat: 100%; Human: 100%; Mouse: 100%; Bovine: 100%; Rabbit: 100%; Guinea pig: 100%; Zebrafish: 82%



[View online »](#)

Protein Families: Transmembrane

### Product images:



WB Suggested Anti-CISD2 Antibody Titration: 0.2-1 ug/ml; Positive Control: Transfected 293T