

Product datasheet for **TA336145**

BAP29 (BCAP29) Rabbit Polyclonal Antibody

Product data:

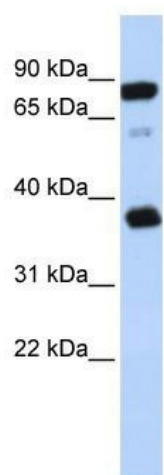
Product Type:	Primary Antibodies
Applications:	WB
Recommended Dilution:	WB
Reactivity:	Human
Host:	Rabbit
Isotype:	IgG
Clonality:	Polyclonal
Immunogen:	The immunogen for Anti-BCAP29 Antibody: synthetic peptide directed towards the middle region of human BCAP29. Synthetic peptide located within the following region: GVMEPQQRNADSHQKLEEAKNRFFPRASSSRSMALQIPIKLILDFLASRT
Formulation:	Liquid. Purified antibody supplied in 1x PBS buffer with 0.09% (w/v) sodium azide and 2% sucrose. <i>Note that this product is shipped as lyophilized powder to China customers.</i>
Purification:	Affinity Purified
Conjugation:	Unconjugated
Storage:	Store at -20°C as received.
Stability:	Stable for 12 months from date of receipt.
Predicted Protein Size:	39 kDa
Gene Name:	B-cell receptor-associated protein 29
Database Link:	NP_001008406 Entrez Gene 55973 Human Q9UHQ4
Background:	BCAP29 may play a role in anterograde transport of membrane proteins from the endoplasmic reticulum to the Golgi. BCAP29 may be involved in CASP8-mediated apoptosis.
Synonyms:	B-cell receptor-associated protein 29; B-cell receptor-associated protein BAP29; BAP29; DKFZp686M2086
Note:	Immunogen Sequence Homology: Human: 100%



[View online »](#)

Protein Families: Druggable Genome, Transmembrane

Product images:



WB Suggested Anti-BCAP29 Antibody Titration:
0.2-1 ug/ml; ELISA Titer: 1: 1562500; Positive
Control: Jurkat cell lysate