

Product datasheet for **TA336144**

MXRA7 Rabbit Polyclonal Antibody

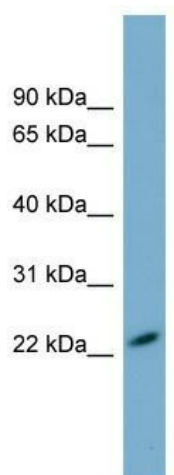
Product data:

Product Type:	Primary Antibodies
Applications:	WB
Recommended Dilution:	WB
Reactivity:	Human
Host:	Rabbit
Isotype:	IgG
Clonality:	Polyclonal
Immunogen:	The immunogen for Anti-MXRA7 Antibody: synthetic peptide directed towards the N terminal of human MXRA7. Synthetic peptide located within the following region: PEPARAPPEPAPPAEATGAPAPSRPCAPEPAASPAGPEEPGEPAGLGELG
Formulation:	Liquid. Purified antibody supplied in 1x PBS buffer with 0.09% (w/v) sodium azide and 2% sucrose.
Purification:	Affinity Purified
Conjugation:	Unconjugated
Storage:	Store at -20°C as received.
Stability:	Stable for 12 months from date of receipt.
Predicted Protein Size:	21 kDa
Gene Name:	matrix remodeling associated 7
Database Link:	NP_001008528 Entrez Gene 439921 Human P84157
Background:	The function of this protein remains unknown.
Synonyms:	PS1TP1; TMAP1
Note:	Immunogen Sequence Homology: Human: 100%; Zebrafish: 91%; Yeast: 90%; Rat: 86%; Dog: 83%; Horse: 79%; Pig: 77%
Protein Families:	Transmembrane



[View online »](#)

Product images:



WB Suggested Anti-MXRA7 Antibody Titration:
0.2-1 ug/ml; Positive Control: Human kidney