

## Product datasheet for **TA336141**

### CHAC2 Rabbit Polyclonal Antibody

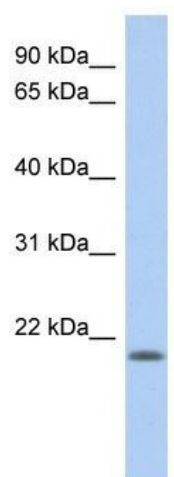
#### Product data:

Product Type:	Primary Antibodies
Applications:	WB
Recommended Dilution:	WB
Reactivity:	Human
Host:	Rabbit
Isotype:	IgG
Clonality:	Polyclonal
Immunogen:	The immunogen for Anti-CHAC2 Antibody: synthetic peptide directed towards the N terminal of human CHAC2. Synthetic peptide located within the following region: MWVFGYGLIWKVDFPYQDKLVGYITNYSRRFWQGSTDHRGVPGKPGRVV
Formulation:	Liquid. Purified antibody supplied in 1x PBS buffer with 0.09% (w/v) sodium azide and 2% sucrose. <i>Note that this product is shipped as lyophilized powder to China customers.</i>
Purification:	Affinity Purified
Conjugation:	Unconjugated
Storage:	Store at -20°C as received.
Stability:	Stable for 12 months from date of receipt.
Predicted Protein Size:	21 kDa
Gene Name:	ChaC cation transport regulator homolog 2
Database Link:	<a href="#">NP_001008708</a> <a href="#">Entrez Gene 494143 Human</a> <a href="#">Q8WUX2</a>
Background:	The specific function of this protein remains unknown.
Synonyms:	cation transport regulator-like 2; cation transport regulator homolog 2 (E. coli); ChaC
Note:	Immunogen Sequence Homology: Dog: 100%; Pig: 100%; Rat: 100%; Human: 100%; Mouse: 100%; Bovine: 100%; Rabbit: 100%; Zebrafish: 100%; Guinea pig: 100%; Horse: 93%; Yeast: 92%



[View online »](#)

## Product images:



WB Suggested Anti-CHAC2 Antibody Titration:  
0.2-1 ug/ml; ELISA Titer: 1:12500; Positive Control:  
Human Placenta