

Product datasheet for **TA336140**

NIPA2 Rabbit Polyclonal Antibody

Product data:

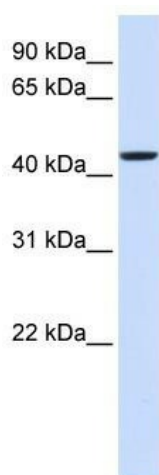
Product Type:	Primary Antibodies
Applications:	WB
Recommended Dilution:	WB
Reactivity:	Human
Host:	Rabbit
Isotype:	IgG
Clonality:	Polyclonal
Immunogen:	The immunogen for Anti-NIPA2 Antibody: synthetic peptide directed towards the middle region of human NIPA2. Synthetic peptide located within the following region: VYITICSVIGAFSVSCVKGLGIAIKELFAGKPVLRHPLAWILLLSLIVCV
Formulation:	Liquid. Purified antibody supplied in 1x PBS buffer with 0.09% (w/v) sodium azide and 2% sucrose. <i>Note that this product is shipped as lyophilized powder to China customers.</i>
Purification:	Affinity Purified
Conjugation:	Unconjugated
Storage:	Store at -20°C as received.
Stability:	Stable for 12 months from date of receipt.
Predicted Protein Size:	39 kDa
Gene Name:	non imprinted in Prader-Willi/Angelman syndrome 2
Database Link:	NP_001008860 Entrez Gene 81614 Human Q8N8Q9
Background:	NIPA2 belongs to the NIPA family. It is a multi-pass membrane protein. The function of the NIPA2 protein remains unknown.
Synonyms:	MGC5466
Note:	Immunogen Sequence Homology: Dog: 100%; Pig: 100%; Horse: 100%; Human: 100%; Rabbit: 100%; Bovine: 93%; Rat: 86%; Mouse: 86%; Zebrafish: 85%; Guinea pig: 79%



[View online »](#)

Protein Families: Transmembrane

Product images:



WB Suggested Anti-NIPA2 Antibody Titration: 0.2-1 ug/ml; ELISA Titer: 1: 312500; Positive Control: 293T cell lysate