

Product datasheet for **TA336139**

Hbe1 Rabbit Polyclonal Antibody

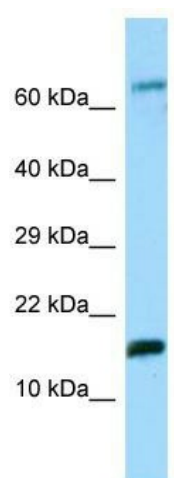
Product data:

Product Type:	Primary Antibodies
Applications:	WB
Recommended Dilution:	WB
Reactivity:	Rat
Host:	Rabbit
Isotype:	IgG
Clonality:	Polyclonal
Immunogen:	The immunogen for Anti-Hbe1 Antibody is: synthetic peptide directed towards the N-terminal region of Rat Hbe1. Synthetic peptide located within the following region: MVNFTAEEKSLINGLWSKVNVEEVGGEALGRLLVYPWTQRFFDSFGNLS
Formulation:	Liquid. Purified antibody supplied in 1x PBS buffer with 0.09% (w/v) sodium azide and 2% sucrose. <i>Note that this product is shipped as lyophilized powder to China customers.</i>
Purification:	Affinity Purified
Conjugation:	Unconjugated
Storage:	Store at -20°C as received.
Stability:	Stable for 12 months from date of receipt.
Predicted Protein Size:	16 kDa
Gene Name:	hemoglobin subunit epsilon 1
Database Link:	NP_001008890 Entrez Gene 293267 Rat
Background:	The function of this protein remains unknown.
Synonyms:	Epsilon-globin; HBE; OTTHUMP00000069642
Note:	Immunogen Sequence Homology: Human: 100%; Dog: 93%; Pig: 93%; Rat: 93%; Horse: 93%; Mouse: 93%; Goat: 86%; Sheep: 86%; Bovine: 86%; Rabbit: 86%



[View online »](#)

Product images:



WB Suggested Anti-Hbe1 Antibody; Titration: 1.0 ug/ml; Positive Control: Rat Stomach