

## Product datasheet for **TA336137**

### ITPRIPL1 Rabbit Polyclonal Antibody

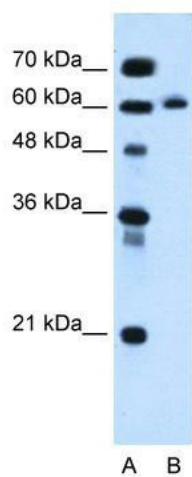
#### Product data:

Product Type:	Primary Antibodies
Applications:	WB
Recommended Dilution:	WB
Reactivity:	Human
Host:	Rabbit
Isotype:	IgG
Clonality:	Polyclonal
Immunogen:	The immunogen for Anti-KIAA1754L Antibody: synthetic peptide directed towards the C terminal of human KIAA1754L. Synthetic peptide located within the following region: EHLFLKLVGRFAPENTCHLKCLQIILSLRQHQSLPHGASRPILTSYHFKT
Formulation:	Liquid. Purified antibody supplied in 1x PBS buffer with 0.09% (w/v) sodium azide and 2% sucrose. <i>Note that this product is shipped as lyophilized powder to China customers.</i>
Purification:	Affinity Purified
Conjugation:	Unconjugated
Storage:	Store at -20°C as received.
Stability:	Stable for 12 months from date of receipt.
Predicted Protein Size:	61 kDa
Gene Name:	inositol 1,4,5-trisphosphate receptor interacting protein-like 1
Database Link:	<a href="#">NP_001008949</a> <a href="#">Entrez Gene 150771 Human</a> <a href="#">Q6GPH6</a>
Background:	The function remains unknown.
Synonyms:	KIAA1754L
Note:	Immunogen Sequence Homology: Human: 100%; Rat: 85%; Dog: 79%; Bovine: 79%
Protein Families:	Transmembrane



[View online »](#)

## Product images:



WB Suggested Anti-KIAA1754L Antibody Titration:  
0.2-1 ug/ml; Positive Control: HepG2 cell lysate