

Product datasheet for **TA336134**

CLSTN1 Rabbit Polyclonal Antibody

Product data:

Product Type:	Primary Antibodies
Applications:	WB
Recommended Dilution:	WB
Reactivity:	Human
Host:	Rabbit
Isotype:	IgG
Clonality:	Polyclonal
Immunogen:	The immunogen for Anti-CLSTN1 Antibody: synthetic peptide directed towards the N terminal of human CLSTN1. Synthetic peptide located within the following region: KPWLEPTYHGIIVTENDNTVLLDPPLIALDKDAPLRFAESFEVTVTKEGEI
Formulation:	Liquid. Purified antibody supplied in 1x PBS buffer with 0.09% (w/v) sodium azide and 2% sucrose. <i>Note that this product is shipped as lyophilized powder to China customers.</i>
Purification:	Affinity Purified
Conjugation:	Unconjugated
Storage:	Store at -20°C as received.
Stability:	Stable for 12 months from date of receipt.
Predicted Protein Size:	110 kDa
Gene Name:	calyntenin 1
Database Link:	NP_001009566 Entrez Gene 22883 Human O94985



[View online »](#)

Background:

CLSTN1 induces KLC1 association with vesicles and functions as a cargo in axonal anterograde transport. Complex formation with APBA2 and APP, CLSTN1 stabilizes APP metabolism and enhances APBA2-mediated suppression of beta-APP40 secretion, due to the retardation of intracellular APP maturation. In complex with APBA2 and C99, a C-terminal APP fragment, CLSTN1 abolishes C99 interaction with PSEN1 and thus APP C99 cleavage by gamma-secretase, most probably through stabilization of the direct interaction between APBA2 and APP. The intracellular fragment AICD suppresses APBB1-dependent transactivation stimulated by APP C-terminal intracellular fragment (AICD), most probably by competing with AICD for APBB1-binding. CLSTN1 may modulate calcium-mediated postsynaptic signals.

Synonyms:

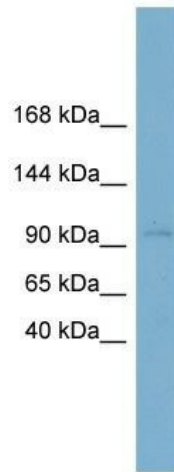
ALC-ALPHA; alcalpha1; alcalpha2; CDHR12; CST-1; CSTN1; PIK3CD; XB31alpha

Note:

Immunogen Sequence Homology: Pig: 100%; Rat: 100%; Horse: 100%; Human: 100%; Mouse: 100%; Rabbit: 100%; Guinea pig: 100%; Dog: 92%; Zebrafish: 85%; Bovine: 82%

Protein Families:

Transmembrane

Product images:

WB Suggested Anti-CLSTN1 Antibody Titration:
0.2-1 ug/ml; ELISA Titer: 1: 312500; Positive
Control: Human kidney