

Product datasheet for **TA336133**

ERMN Rabbit Polyclonal Antibody

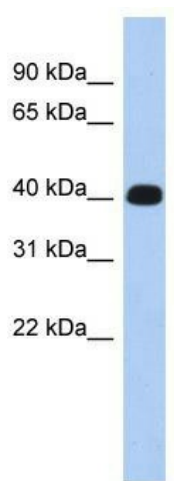
Product data:

Product Type:	Primary Antibodies
Applications:	WB
Recommended Dilution:	WB
Reactivity:	Human
Host:	Rabbit
Isotype:	IgG
Clonality:	Polyclonal
Immunogen:	The immunogen for Anti-KIAA1189 Antibody: synthetic peptide directed towards the middle region of human KIAA1189. Synthetic peptide located within the following region: RVIEFKKKHEEVVSQFKEEGDASEDSPLSSASSQAVTPDEQPTLGKKSDIS
Formulation:	Liquid. Purified antibody supplied in 1x PBS buffer with 0.09% (w/v) sodium azide and 2% sucrose.
Purification:	Affinity Purified
Conjugation:	Unconjugated
Storage:	Store at -20°C as received.
Stability:	Stable for 12 months from date of receipt.
Predicted Protein Size:	34 kDa
Gene Name:	ermin
Database Link:	NP_001009959 Entrez Gene 57471 Human Q8TAM6
Background:	The specific function of this protein remains unknown.
Synonyms:	JN; KIAA1189



Note: Immunogen Sequence Homology: Human: 100%; Pig: 86%; Rat: 86%; Rabbit: 86%; Guinea pig: 86%; Dog: 79%

Product images:



WB Suggested Anti-KIAA1189 Antibody
Titration: 0.2-1 ug/ml; ELISA Titer: 1:312500;
Positive Control: Human Muscle