

Product datasheet for **TA336132**

DALRD3 Rabbit Polyclonal Antibody

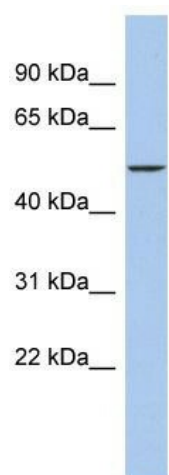
Product data:

Product Type:	Primary Antibodies
Applications:	WB
Recommended Dilution:	WB
Reactivity:	Human
Host:	Rabbit
Isotype:	IgG
Clonality:	Polyclonal
Immunogen:	The immunogen for Anti-DALRD3 Antibody: synthetic peptide directed towards the middle region of human DALRD3. Synthetic peptide located within the following region: TEIFGVLSVATIKFEMLSTAPQSQLFLALADSSISTKGTKSGTFVMYNCA
Formulation:	Liquid. Purified antibody supplied in 1x PBS buffer with 0.09% (w/v) sodium azide and 2% sucrose. <i>Note that this product is shipped as lyophilized powder to China customers.</i>
Purification:	Affinity Purified
Conjugation:	Unconjugated
Storage:	Store at -20°C as received.
Stability:	Stable for 12 months from date of receipt.
Predicted Protein Size:	59 kDa
Gene Name:	DALR anticodon binding domain containing 3
Database Link:	NP_001009996 Entrez Gene 55152 Human Q5D0E6
Background:	The specific function of this protein remains unknown.
Synonyms:	FLJ10496
Note:	Immunogen Sequence Homology: Pig: 100%; Horse: 100%; Human: 100%; Rabbit: 100%; Guinea pig: 100%; Dog: 93%; Bovine: 93%; Rat: 86%; Mouse: 86%



[View online »](#)

Product images:



WB Suggested Anti-DALRD3 Antibody Titration:
0.2-1 ug/ml; ELISA Titer: 1:62500; Positive Control:
HepG2 cell lysate