

Product datasheet for **TA336130**

NRG3 Rabbit Polyclonal Antibody

Product data:

Product Type:	Primary Antibodies
Applications:	IHC, WB
Recommended Dilution:	WB, IHC
Reactivity:	Human
Host:	Rabbit
Isotype:	IgG
Clonality:	Polyclonal
Immunogen:	The immunogen for Anti-NRG3 Antibody: synthetic peptide directed towards the middle region of human NRG3. Synthetic peptide located within the following region: TSINMQLPSRETNPYFNSLEQKDLVGYSSTRASSVPIIPSVGLEETCLQM
Formulation:	Liquid. Purified antibody supplied in 1x PBS buffer with 0.09% (w/v) sodium azide and 2% sucrose. <i>Note that this product is shipped as lyophilized powder to China customers.</i>
Purification:	Affinity Purified
Conjugation:	Unconjugated
Storage:	Store at -20°C as received.
Stability:	Stable for 12 months from date of receipt.
Predicted Protein Size:	75 kDa
Gene Name:	neuregulin 3
Database Link:	NP_001010848 Entrez Gene 10718 Human P56975
Background:	Neuregulins are a family of growth and differentiation factors that are related to epidermal growth factor.
Synonyms:	HRG3; pro-NRG3
Note:	Immunogen Sequence Homology: Rat: 100%; Human: 100%; Mouse: 100%; Rabbit: 100%; Pig: 93%; Horse: 93%; Bovine: 93%; Guinea pig: 93%; Dog: 86%



[View online »](#)

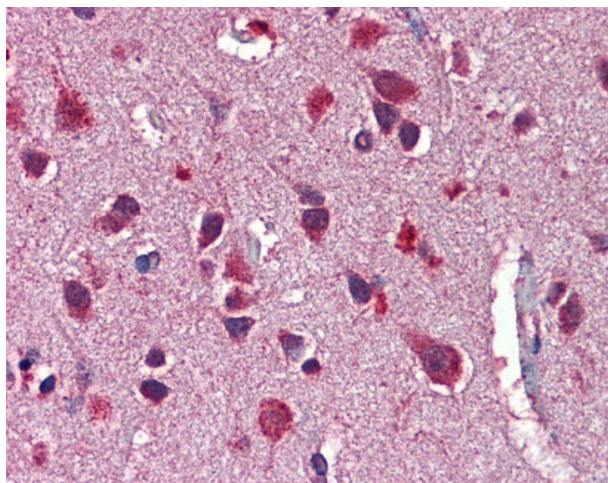
Protein Families: Druggable Genome, Transmembrane

Protein Pathways: ErbB signaling pathway

Product images:



WB Suggested Anti-NRG3 Antibody Titration: 0.2-1 ug/ml; ELISA Titer: 1: 312500; Positive Control: Jurkat cell lysate



Brain, cortex