

Product datasheet for **TA336128**

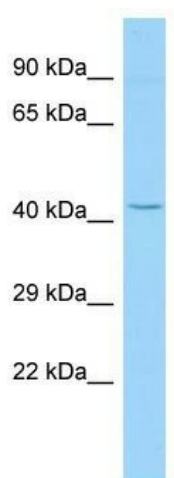
SRD5A2L2 (TECRL) Rabbit Polyclonal Antibody

Product data:

Product Type:	Primary Antibodies
Applications:	WB
Recommended Dilution:	WB
Reactivity:	Mouse
Host:	Rabbit
Isotype:	IgG
Clonality:	Polyclonal
Immunogen:	The immunogen for Anti-Tecrl Antibody is: synthetic peptide directed towards the N-terminal region of Mouse Tecrl. Synthetic peptide located within the following region: AGPLKTTTAVKHSKTTTFFEIEILDAHTRKQICIVDKVTQTSTIHDVKQKF
Formulation:	Liquid. Purified antibody supplied in 1x PBS buffer with 0.09% (w/v) sodium azide and 2% sucrose. <i>Note that this product is shipped as lyophilized powder to China customers.</i>
Purification:	Affinity Purified
Conjugation:	Unconjugated
Storage:	Store at -20°C as received.
Stability:	Stable for 12 months from date of receipt.
Predicted Protein Size:	42 kDa
Gene Name:	trans-2,3-enoyl-CoA reductase-like
Database Link:	NP_001010874 Entrez Gene 243078 Mouse Q5HYJ1
Background:	The function of this protein remains unknown.
Synonyms:	GPSN2L; SRD5A2L2; TERL
Note:	Immunogen Sequence Homology: Rat: 100%; Human: 100%; Mouse: 100%; Dog: 92%; Bovine: 92%; Horse: 85%; Rabbit: 85%; Pig: 83%; Guinea pig: 83%
Protein Families:	Transmembrane



[View online »](#)

Product images:

Host: Rabbit; Target Name: Tecrl; Sample Tissue: Mouse Testis lysates; Antibody Dilution: 1.0 ug/ml